

For Research Use Only

CHMP4B Polyclonal antibody, PBS Only

Catalog Number: 13683-1-PBS

Featured Product



Basic Information

Catalog Number:

13683-1-PBS

Size:

100ug, Concentration: 1 mg/ml by Nanodrop;

Source:

Rabbit

Isotype:

IgG

Immunogen Catalog Number:

AG4544

GenBank Accession Number:

BC033859

GeneID (NCBI):

128866

UNIPROT ID:

Q9H444

Full Name:

chromatin modifying protein 4B

Calculated MW:

224 aa, 25 kDa

Observed MW:

25-33 kDa

Purification Method:

Antigen affinity purification

Applications

Tested Applications:

WB, IF/ICC, Indirect ELISA

Species Specificity:

human, mouse, rat

Background Information

CHMP4B (charged multivesicular body protein 4b) is a human homologue of yeast Snf7p (also named Vps32p) and a member of CHMP family which is implicated in multivesicular body (MVB) sorting. The CHMP proteins are components of ESCRT-III (endosomal sorting complex required for transport III), a complex involved in degradation of surface receptor proteins and formation of endocytic multivesicular bodies. Among seven CHMP family members, only CHMP4 has been found to interact with Alix, a multifunctional adaptor protein in various cellular functions. This antibody is highly specific to the CHMP4B and it doesn't cross-react with other CHMPs as well as other CHMP4s (CHMP4A and CHMP4C). CHMP4B can be detected 25-33 kDa by post-translational modification (PMID:26490837).

Storage

Storage:

Store at -80°C.

Storage Buffer:

PBS only, pH7.3

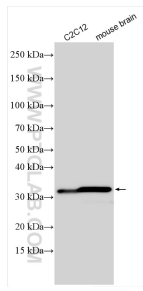
For technical support and original validation data for this product please contact:

T: 1 (888) 4PTGLAB (1-888-478-4522) (toll free in USA), or 1(312) 455-8498 (outside USA)

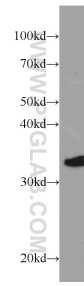
E: proteintech@ptglab.com
W: ptglab.com

This product is exclusively available under Proteintech Group brand and is not available to purchase from any other manufacturer.

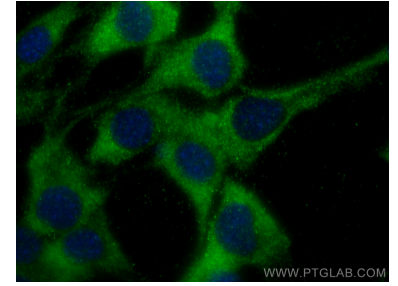
Selected Validation Data



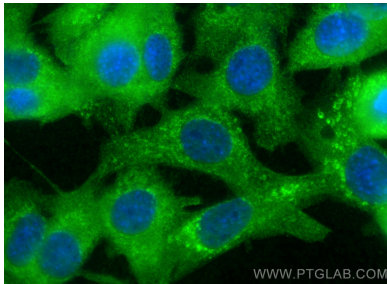
Various lysates were subjected to SDS PAGE followed by western blot with 13683-1-AP (CHMP4B antibody) at dilution of 1:4000 incubated at room temperature for 1.5 hours. This data was developed using the same antibody clone with 13683-1-PBS in a different storage buffer formulation.



mouse heart tissue were subjected to SDS PAGE followed by western blot with 13683-1-AP (CHMP4B antibody) at dilution of 1:200 incubated at room temperature for 1.5 hours. This data was developed using the same antibody clone with 13683-1-PBS in a different storage buffer formulation.



Immunofluorescent analysis of (-20°C Methanol) fixed C2C12 cells using CHMP4B antibody (13683-1-AP) at dilution of 1:200 and CoraLite®488-Conjugated AffiniPure Goat Anti-Rabbit IgG(H+L). This data was developed using the same antibody clone with 13683-1-PBS in a different storage buffer formulation.



Immunofluorescent analysis of (-20°C Ethanol) fixed C2C12 cells using CHMP4B antibody (13683-1-AP) at dilution of 1:400 and CoraLite®488-Conjugated Goat Anti-Rabbit IgG(H+L) (SA00013-2). This data was developed using the same antibody clone with 13683-1-PBS in a different storage buffer formulation.