

For Research Use Only

MTMR6 Polyclonal antibody

Catalog Number: 13684-1-AP



Basic Information

Catalog Number: 13684-1-AP	GenBank Accession Number: BC040012	Purification Method: Antigen affinity purification
Size: 150ul , Concentration: 350 µg/ml by Nanodrop and 300 µg/ml by Bradford method using BSA as the standard;	GeneID (NCBI): 9107	Recommended Dilutions: WB 1:500-1:2400 IHC 1:20-1:200
Source: Rabbit	Full Name: myotubularin related protein 6	
Isotype: IgG	Calculated MW: 621 aa, 72 kDa	
Immunogen Catalog Number: AG4551	Observed MW: 64-67 kDa, 72-76 kDa	

Applications

Tested Applications: IHC, WB, ELISA	Positive Controls:
Species Specificity: human, mouse, rat	WB : human heart tissue, mouse heart tissue
Note-IHC: suggested antigen retrieval with TE buffer pH 9.0; (*) Alternatively, antigen retrieval may be performed with citrate buffer pH 6.0	IHC : human liver tissue,

Background Information

Storage

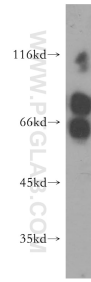
Storage:
Store at -20°C. Stable for one year after shipment.
Storage Buffer:
PBS with 0.02% sodium azide and 50% glycerol pH 7.3.
Aliquoting is unnecessary for -20°C storage

*** 20ul sizes contain 0.1% BSA

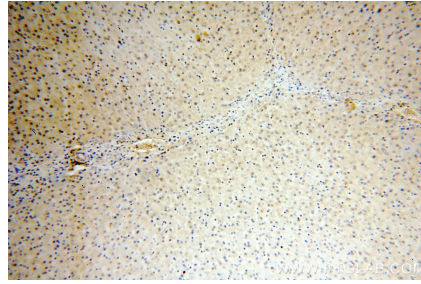
For technical support and original validation data for this product please contact:
T: 1 (888) 4PTGLAB (1-888-478-4522) (toll free in USA), or 1(312) 455-8498 (outside USA)
E: proteintech@ptglab.com
W: ptglab.com

This product is exclusively available under Proteintech Group brand and is not available to purchase from any other manufacturer.

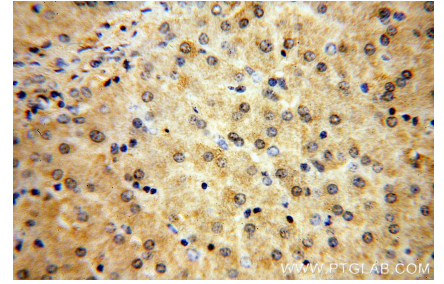
Selected Validation Data



human heart tissue were subjected to SDS PAGE followed by western blot with 13684-1-AP (MTMR6 antibody) at dilution of 1:500 incubated at room temperature for 1.5 hours.



Immunohistochemical analysis of paraffin-embedded human liver using 13684-1-AP (MTMR6 antibody) at dilution of 1:100 (under 10x lens).



Immunohistochemical analysis of paraffin-embedded human liver using 13684-1-AP (MTMR6 antibody) at dilution of 1:100 (under 40x lens).