

# NEDD4L Polyclonal antibody

Catalog Number: 13690-1-AP

Featured Product

29 Publications

## Basic Information

## Catalog Number:

13690-1-AP

## Size:

150ul, Concentration: 500 µg/ml by Nanodrop;

## Source:

Rabbit

## Isotype:

IgG

## Immunogen Catalog Number:

AG4565

## GenBank Accession Number:

BC032597

## GeneID (NCBI):

23327

## Full Name:

neural precursor cell expressed, developmentally down-regulated 4-like

## Calculated MW:

854 aa, 96 kDa

## Observed MW:

112 kDa, 125 kDa

## Purification Method:

Antigen affinity purification

## Recommended Dilutions:

WB 1:1000-1:5000

IP 0.5-4.0 µg for IP and 1:200-1:1000 for WB

IHC 1:50-1:500

IF 1:50-1:500

## Applications

## Tested Applications:

IF, IHC, IP, WB, ELISA

## Cited Applications:

CoIP, IF, IHC, IP, WB

## Species Specificity:

human, mouse, rat

## Cited Species:

human, rat, mouse

**Note-IHC: suggested antigen retrieval with TE buffer pH 9.0; (\*) Alternatively, antigen retrieval may be performed with citrate buffer pH 6.0**

## Positive Controls:

WB : C6 cells, HT-1080 cells, PC-3 cells, PC-12 cells

IP : C6 cells,

IHC : human prostate cancer tissue, human stomach cancer tissue

IF : PC-3 cells,

## Background Information

NEDD4L(E3 ubiquitin-protein ligase NEDD4-like) is also named as KIAA0439, NEDL3, Nedd4-2. It accepts ubiquitin from an E2 ubiquitin-conjugating enzyme in the form of a thioester and then directly transfers the ubiquitin to targeted substrates and is the principal ubiquitin ligase that selectively targets activated SMAD2 and SMAD3 for destruction (PMID:19917253). Nedd4L binds the PY motif of ENaC COOH terminals and catalyzes ubiquitination of the NH2 terminus of the protein for subsequent degradation (PMID:18268134). It has some isoforms produced by alternative splicing. This antibody may have cross reaction with NEDD4 due to the high homology of the antigen.

## Notable Publications

Author	Pubmed ID	Journal	Application
Siyuan Chen	30224386	J Exp Med	WB
Pan Wang	34582065	FASEB J	WB, IP
Gao Chengcheng C	21909941	Med Oncol	IHC

## Storage

## Storage:

Store at -20°C. Stable for one year after shipment.

## Storage Buffer:

PBS with 0.02% sodium azide and 50% glycerol pH 7.3.

Aliquoting is unnecessary for -20°C storage

\*\*\* 20ul sizes contain 0.1% BSA

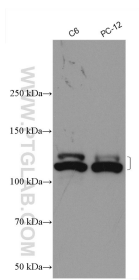
For technical support and original validation data for this product please contact:

T: 1 (888) 4PTGLAB (1-888-478-4522) (toll free in USA), or 1(312) 455-8498 (outside USA)

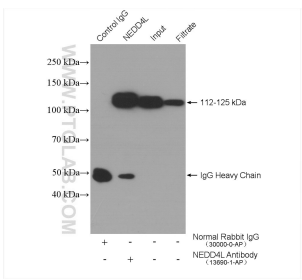
E: [proteintech@ptglab.com](mailto:proteintech@ptglab.com)  
W: [ptglab.com](http://ptglab.com)

This product is exclusively available under Proteintech Group brand and is not available to purchase from any other manufacturer.

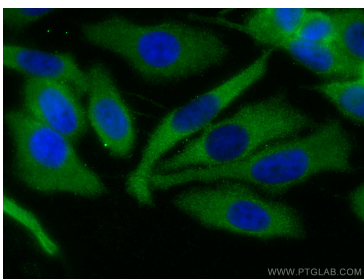
Selected Validation Data



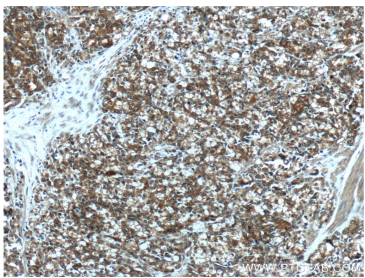
Various lysates were subjected to SDS PAGE followed by western blot with 13690-1-AP (NEDD4L antibody) at dilution of 1:2500 incubated at room temperature for 1.5 hours.



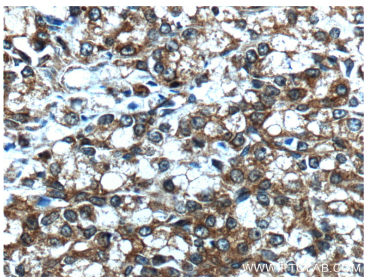
IP result of anti-NEDD4L (IP:13690-1-AP, 4ug; Detection:13690-1-AP 1:300) with C6 cells lysate 1000 ug.



Immunofluorescent analysis of (-20°C Methanol) fixed PC-3 cells using NEDD4L antibody (13690-1-AP) at dilution of 1:200 and CoraLite®488-Conjugated AffiniPure Goat Anti-Rabbit IgG(H+L).



Immunohistochemical analysis of paraffin-embedded human prostate cancer tissue slide using 13690-1-AP (NEDD4L Antibody) at dilution of 1:200 (under 10x lens).



Immunohistochemical analysis of paraffin-embedded human prostate cancer tissue slide using 13690-1-AP (NEDD4L Antibody) at dilution of 1:200 (under 40x lens).