

For Research Use Only

IRF2BP1 Polyclonal antibody

Catalog Number: 13698-1-AP

2 Publications



Basic Information

Catalog Number:

13698-1-AP

Size:

150ul, Concentration: 300 ug/ml by Nanodrop and 133 ug/ml by Bradford method using BSA as the standard;

Source:

Rabbit

Isotype:

IgG

Immunogen Catalog Number:

AG4596

GenBank Accession Number:

BC038222

GeneID (NCBI):

26145

UNIPROT ID:

Q8IU81

Full Name:

interferon regulatory factor 2 binding protein 1

Calculated MW:

584 aa, 62 kDa

Observed MW:

62-72 kDa

Purification Method:

Antigen affinity purification

Recommended Dilutions:

WB 1:500-1:1000

IP 0.5-4.0 ug for 1.0-3.0 mg of total protein lysate

IHC 1:50-1:500

IF/ICC 1:50-1:500

Applications

Tested Applications:

WB, IHC, IF/ICC, IP, ELISA

Cited Applications:

WB, ChIP, IF

Species Specificity:

human, mouse, rat

Cited Species:

human

Note-IHC: suggested antigen retrieval with TE buffer pH 9.0; (*) Alternatively, antigen retrieval may be performed with citrate buffer pH 6.0

Positive Controls:

WB : HeLa cells, HEK-293 cells, Jurkat cells, mouse brain tissue, rat lymph tissue

IP : HEK-293 cells,

IHC : human breast cancer tissue,

IF/ICC : HeLa cells,

Notable Publications

Author	Pubmed ID	Journal	Application
Juan F Correa-Vázquez	33753728	Cell Death Dis	WB
Sina V Barysch	33480129	EMBO Rep	IF,ChIP

Storage

Storage:

Store at -20°C. Stable for one year after shipment.

Storage Buffer:

PBS with 0.02% sodium azide and 50% glycerol pH 7.3.

Aliquoting is unnecessary for -20°C storage

*** 20ul sizes contain 0.1% BSA

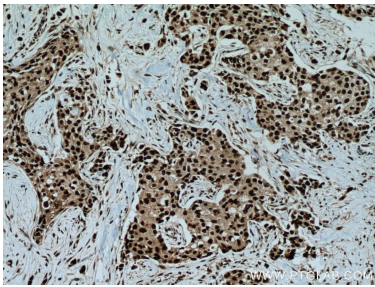
For technical support and original validation data for this product please contact:

T: 1 (888) 4PTGLAB (1-888-478-4522) (toll free in USA), or 1(312) 455-8498 (outside USA)

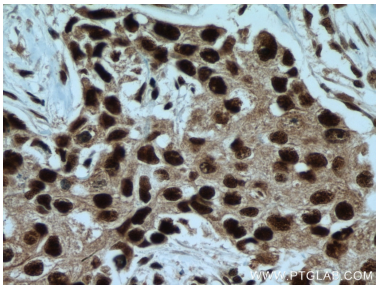
E: proteintech@ptglab.com
W: ptglab.com

This product is exclusively available under Proteintech Group brand and is not available to purchase from any other manufacturer.

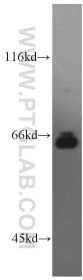
Selected Validation Data



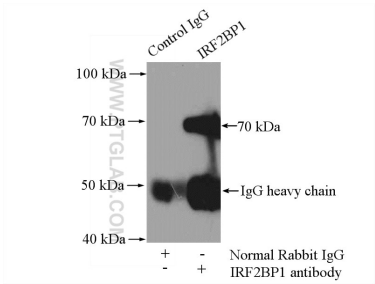
Immunohistochemical analysis of paraffin-embedded human breast cancer tissue slide using 13698-1-AP (IRF2BP1 antibody) at dilution of 1:200 (under 10x lens). Heat mediated antigen retrieval with Tris-EDTA buffer (pH 9.0).



Immunohistochemical analysis of paraffin-embedded human breast cancer tissue slide using 13698-1-AP (IRF2BP1 antibody) at dilution of 1:200 (under 40x lens). Heat mediated antigen retrieval with Tris-EDTA buffer (pH 9.0).



HeLa cells were subjected to SDS PAGE followed by western blot with 13698-1-AP (IRF2BP1 antibody) at dilution of 1:800 incubated at room temperature for 1.5 hours.



IP result of anti-IRF2BP1 (IP:13698-1-AP, 4ug; Detection:13698-1-AP 1:500) with HEK-293 cells lysate 2000ug.



Immunofluorescent analysis of (4% PFA) fixed HeLa cells using 13698-1-AP (IRF2BP1 antibody) at dilution of 1:50 and Alexa Fluor 488-conjugated AffiniPure Goat Anti-Rabbit IgG(H+L).