

For Research Use Only

IRF2BP1 Polyclonal antibody, PBS Only

Catalog Number: 13698-1-PBS



Basic Information

Catalog Number: 13698-1-PBS	GenBank Accession Number: BC038222	Purification Method: Antigen affinity purification
Size: 100ug, Concentration: 1 mg/ml by Nanodrop;	GeneID (NCBI): 26145	
Source: Rabbit	UNIPROT ID: Q8IU81	
Isotype: IgG	Full Name: interferon regulatory factor 2 binding protein 1	
Immunogen Catalog Number: AG4596	Calculated MW: 584 aa, 62 kDa	
	Observed MW: 62-72 kDa	

Applications

Tested Applications:
WB, IHC, IF/ICC, IP, Indirect ELISA

Species Specificity:
human, mouse, rat

Background Information

IRF2BP1 inhibits IRF2-mediated transcriptional activation by interacting with IRF2. In epidermal growth factor receptor (EGFR) signaling, transient deSUMOylation of IRF2BP1 is essential for the proper expression of immediate early genes such as DUSP1 and ATF3. IRF2BP1 is also involved in the TGF- β signaling pathway by controlling the accumulation of cPML in the cytoplasm, which in turn affects the phosphorylation of Smad2 and the assembly of the Smad2-receptor complex.

Storage

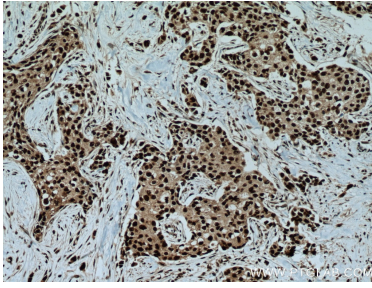
Storage:
Store at -80°C.

Storage Buffer:
PBS only, pH7.3

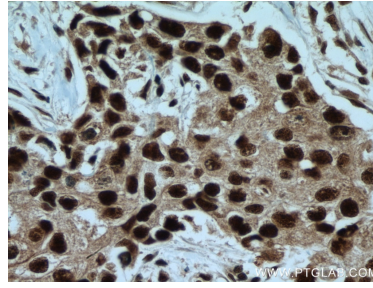
For technical support and original validation data for this product please contact:
T: 1 (888) 4PTGLAB (1-888-478-4522) (toll free in USA), or 1(312) 455-8498 (outside USA) E: proteintech@ptglab.com
W: ptglab.com

This product is exclusively available under Proteintech Group brand and is not available to purchase from any other manufacturer.

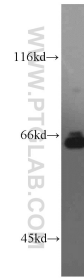
Selected Validation Data



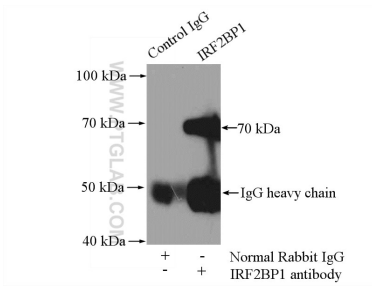
Immunohistochemical analysis of paraffin-embedded human breast cancer tissue slide using 13698-1-AP (IRF2BP1 antibody) at dilution of 1:200 (under 10x lens). Heat mediated antigen retrieval with Tris-EDTA buffer (pH 9.0). This data was developed using the same antibody clone with 13698-1-PBS in a different storage buffer formulation.



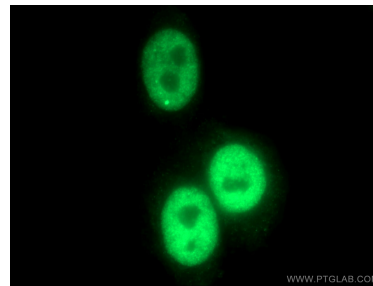
Immunohistochemical analysis of paraffin-embedded human breast cancer tissue slide using 13698-1-AP (IRF2BP1 antibody) at dilution of 1:200 (under 40x lens). Heat mediated antigen retrieval with Tris-EDTA buffer (pH 9.0). This data was developed using the same antibody clone with 13698-1-PBS in a different storage buffer formulation.



HeLa cells were subjected to SDS PAGE followed by western blot with 13698-1-AP (IRF2BP1 antibody) at dilution of 1:800 incubated at room temperature for 1.5 hours. This data was developed using the same antibody clone with 13698-1-PBS in a different storage buffer formulation.



IP result of anti-IRF2BP1 (IP:13698-1-AP, 4ug; Detection:13698-1-AP 1:500) with HEK-293 cells lysate 2000ug. This data was developed using the same antibody clone with 13698-1-PBS in a different storage buffer formulation.



Immunofluorescent analysis of (4% PFA) fixed HeLa cells using 13698-1-AP (IRF2BP1 antibody) at dilution of 1:50 and Alexa Fluor 488-conjugated AffiniPure Goat Anti-Rabbit IgG(H+L). This data was developed using the same antibody clone with 13698-1-PBS in a different storage buffer formulation.