

For Research Use Only

Carboxypeptidase E Polyclonal antibody



Catalog Number: 13710-1-AP

Featured Product

7 Publications

Basic Information

Catalog Number:
13710-1-AP

Size:
150ul , Concentration: 350 µg/ml by Nanodrop and 153 µg/ml by Bradford method using BSA as the standard;

Source:
Rabbit

Isotype:
IgG

Immunogen Catalog Number:
AG4647

GenBank Accession Number:
BC033866

GeneID (NCBI):
1363

Full Name:
carboxypeptidase E

Calculated MW:
476 aa, 53 kDa

Observed MW:
50 kDa, 52 kDa

Purification Method:
Antigen affinity purification

Recommended Dilutions:
WB 1:500-1:1000
IP 0.5-4.0 ug for IP and 1:500-1:1000 for WB
IHC 1:20-1:200
IF 1:50-1:500

Applications

Tested Applications:
IF, IHC, IP, WB, ELISA

Cited Applications:
IF, IHC, WB

Species Specificity:
human, mouse, rat

Cited Species:
human, mouse, rat

Note-IHC: suggested antigen retrieval with TE buffer pH 9.0; (*) Alternatively, antigen retrieval may be performed with citrate buffer pH 6.0

Positive Controls:

WB: mouse brain tissue, human brain tissue, rat brain tissue

IP: mouse brain tissue,

IHC: human pituitary tissue,

IF: SH-SY5Y cells,

Background Information

CPE(Carboxypeptidase E) is also named as CPH.It belongs to the peptidase M14 family and is involved in the biosynthesis of peptide hormones and neurotransmitters, including insulin.The deduced 476-amino acid human protein contains an N-terminal signal peptide, followed by a 'pro' sequence, a polyarginine stretch, and 2 potential N-glycosylation sites.

Notable Publications

Author	Pubmed ID	Journal	Application
Kristen E Rohli	36325514	Function (Oxf)	WB
Jing Yu	34630524	Front Genet	WB,IHC
Seokwon Jo	33115825	Diabetes	WB

Storage

Storage:

Store at -20°C. Stable for one year after shipment.

Storage Buffer:

PBS with 0.02% sodium azide and 50% glycerol pH 7.3.

Aliquoting is unnecessary for -20°C storage

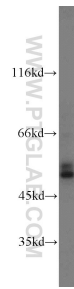
For technical support and original validation data for this product please contact:

T: 1 (888) 4PTGLAB (1-888-478-4522) (toll free in USA), or 1(312) 455-8498 (outside USA)

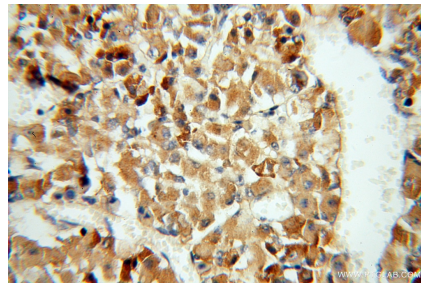
E: proteintech@ptglab.com
W: ptglab.com

This product is exclusively available under Proteintech Group brand and is not available to purchase from any other manufacturer.

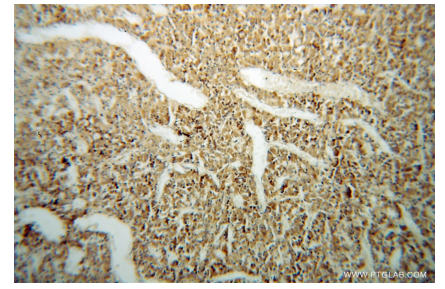
Selected Validation Data



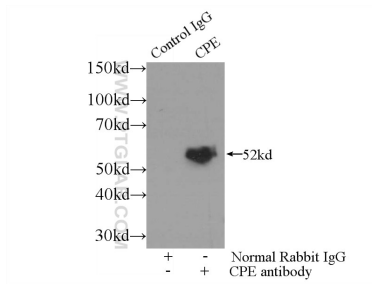
mouse brain tissue were subjected to SDS PAGE followed by western blot with 13710-1-AP (Carboxypeptidase E antibody) at dilution of 1:600 incubated at room temperature for 1.5 hours.



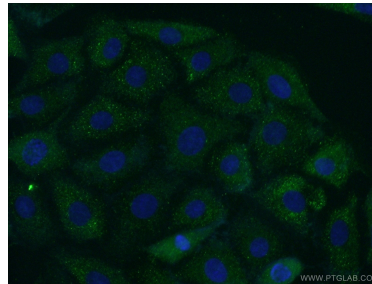
Immunohistochemical analysis of paraffin-embedded human pituitary using 13710-1-AP (Carboxypeptidase E antibody) at dilution of 1:50 (under 40x lens).



Immunohistochemical analysis of paraffin-embedded human pituitary using 13710-1-AP (Carboxypeptidase E antibody) at dilution of 1:50 (under 10x lens).



IP Result of anti-Carboxypeptidase E (IP:13710-1-AP, 3ug; Detection:13710-1-AP 1:500) with mouse brain tissue lysate 3500ug.



Immunofluorescent analysis of (-20°C Acetone) fixed SH-SY5Y cells using 13710-1-AP (Carboxypeptidase E antibody) at dilution of 1:50 and Alexa Fluor 488-conjugated AffiniPure Goat Anti-Rabbit IgG(H+L).