

For Research Use Only

LSS Polyclonal antibody

Catalog Number: 13715-1-AP **12 Publications**



Basic Information

Catalog Number: 13715-1-AP	GenBank Accession Number: BC035638	Purification Method: Antigen affinity purification
Size: 150ul , Concentration: 500 µg/ml by Nanodrop;	GeneID (NCBI): 4047	Recommended Dilutions: WB 1:1000-1:5000 IP 0.5-4.0 ug for IP and 1:500-1:1000 for WB
Source: Rabbit	Full Name: lanosterol synthase (2,3-oxidosqualene-lanosterol cyclase)	IHC 1:20-1:200 IF 1:20-1:200
Isotype: IgG	Calculated MW: 732 aa, 83 kDa	
Immunogen Catalog Number: AG4655	Observed MW: 70-75 kDa	

Applications

Tested Applications:
FC, IF, IHC, IP, WB, ELISA

Cited Applications:
IF, IHC, WB

Species Specificity:
human, mouse, rat

Cited Species:
human, rat, mouse, rabbit

Note-IHC: suggested antigen retrieval with TE buffer pH 9.0; (*) Alternatively, antigen retrieval may be performed with citrate buffer pH 6.0

Positive Controls:

WB : HT-1376 cells, PC-3 cells, HeLa cells, HepG2 cells, mouse testis tissue, human brain tissue, mouse pancreas tissue, mouse liver tissue, SH-SY5Y cells

IP : HepG2 cells,

IHC : human liver tissue, mouse testis tissue

IF : HepG2 cells,

Background Information

LSS, also named as OSC, is lanosterol synthase which catalyzes the cyclization of (S)-2,3 oxidosqualene to lanosterol, a reaction that forms the sterol nucleus. LSS gene has three isoforms with MW 74 kDa and 82-85 kDa. This antibody can recognize all these three isoforms.

Notable Publications

Author	Pubmed ID	Journal	Application
Audrey Basque	36279966	Toxicol In Vitro	WB
Timothy J Grunkemeyer	34029588	J Biol Chem	WB
Ryan S Wible	29367259	Mol Pharmacol	WB

Storage

Storage:

Store at -20°C. Stable for one year after shipment.

Storage Buffer:

PBS with 0.02% sodium azide and 50% glycerol pH 7.3.

Aliquoting is unnecessary for -20°C storage

*** 20ul sizes contain 0.1% BSA

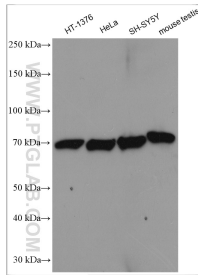
For technical support and original validation data for this product please contact:

T: 1 (888) 4PTGLAB (1-888-478-4522) (toll free in USA), or 1(312) 455-8498 (outside USA)

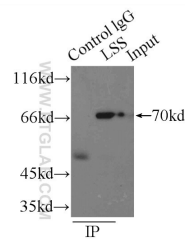
E: proteintech@ptglab.com
W: ptglab.com

This product is exclusively available under Proteintech Group brand and is not available to purchase from any other manufacturer.

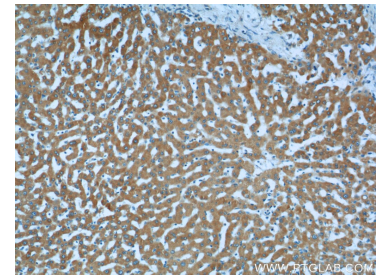
Selected Validation Data



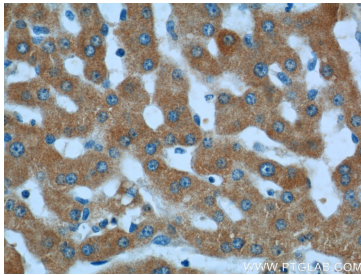
Various lysates were subjected to SDS PAGE followed by western blot with 13715-1-AP (LSS antibody) at dilution of 1:2500 incubated at room temperature for 1.5 hours.



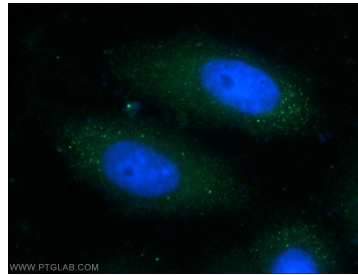
IP Result of anti-LSS (IP:13715-1-AP, 3ug; Detection:13715-1-AP 1:500) with HepG2 cells lysate 2900ug.



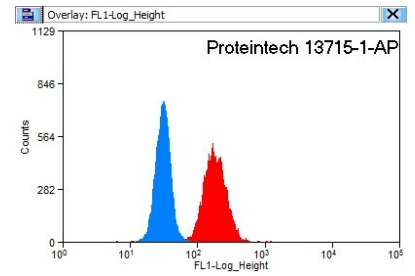
Immunohistochemical analysis of paraffin-embedded human liver tissue slide using 13715-1-AP (LSS Antibody) at dilution of 1:50 (under 10x lens).



Immunohistochemical analysis of paraffin-embedded human liver tissue slide using 13715-1-AP (LSS Antibody) at dilution of 1:50 (under 40x lens).



Immunofluorescent analysis of HepG2 cells using 13715-1-AP (LSS antibody) at dilution of 1:50 and Alexa Fluor 488-conjugated AffiniPure Goat Anti-Rabbit IgG(H+L).



1X10⁶ HeLa cells were stained with 0.2ug LSS antibody (13715-1-AP, red) and control antibody (blue). Fixed with 90% MeOH blocked with 3% BSA (30 min). Alexa Fluor 488-conjugated AffiniPure Goat Anti-Rabbit IgG(H+L) with dilution 1:1500.