

For Research Use Only

# BOULE Polyclonal antibody, PBS Only

Catalog Number:13720-1-PBS



## Basic Information

|  |   |  |
|--|---|--|
| <b>Catalog Number:</b><br>13720-1-PBS                      | <b>GenBank Accession Number:</b><br>BC033674      | <b>Purification Method:</b><br>Antigen affinity purification |
| <b>Size:</b><br>100ug, Concentration: 1 mg/ml by Nanodrop; | <b>GeneID (NCBI):</b><br>66037                    |  |
| <b>Source:</b><br>Rabbit                                   | <b>UNIPROT ID:</b><br>Q8N9W6                      |  |
| <b>Isotype:</b><br>IgG                                     | <b>Full Name:</b><br>bol, boule-like (Drosophila) |  |
| <b>Immunogen Catalog Number:</b><br>AG4662                 | <b>Calculated MW:</b><br>283 aa, 31 kDa           |  |
|  | <b>Observed MW:</b><br>38-42 kDa                  |  |

## Applications

**Tested Applications:**  
WB, IHC, IF-P, IF-Fro, IP, Indirect ELISA

**Species Specificity:**  
human, mouse, rat

## Background Information

BOULE, also called BOLL, belongs to the RRM DAZ family. BOULE has been identified as being involved in regulating the development and differentiation of germ cells and playing an essential role in infertility (PMID: 31683986). BOULE is specifically expressed in testis, but not in early embryos, primordial germ cells, and spermatogonial cells. It is first expressed in the cytoplasm of spermatocytes and then persists through meiosis. BOULE has 5 isoforms with the molecular mass of 19 and 31-38 kDa. This antibody detects two bands in testis, the lower band of ~40 kDa in size corresponds to the predicted endogenous BOULE protein, while the upper band may be an isoform or posttranslationally modified version of the BOULE protein (PMID: 27632217).

## Storage

**Storage:**  
Store at -80°C.

**Storage Buffer:**  
PBS only, pH7.3

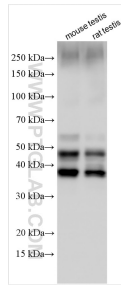
For technical support and original validation data for this product please contact:

T: 1 (888) 4PTGLAB (1-888-478-4522) (toll free in USA), or 1(312) 455-8498 (outside USA)

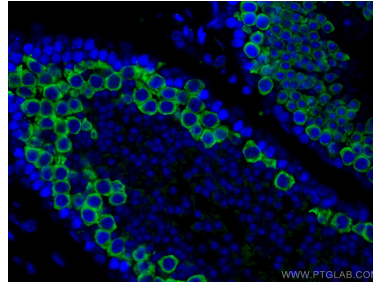
E: [proteintech@ptglab.com](mailto:proteintech@ptglab.com)  
W: [ptglab.com](http://ptglab.com)

**This product is exclusively available under Proteintech Group brand and is not available to purchase from any other manufacturer.**

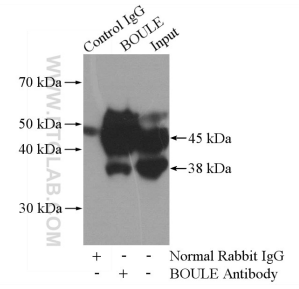
## Selected Validation Data



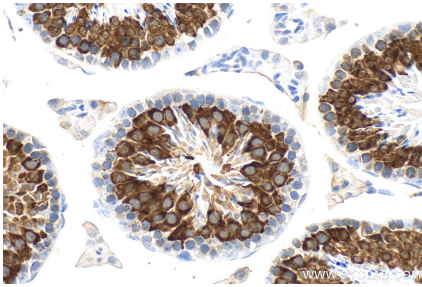
Various lysates were subjected to SDS PAGE followed by western blot with 13720-1-AP (BOULE antibody) at dilution of 1:10000 incubated at room temperature for 1.5 hours. This data was developed using the same antibody clone with 13720-1-PBS in a different storage buffer formulation.



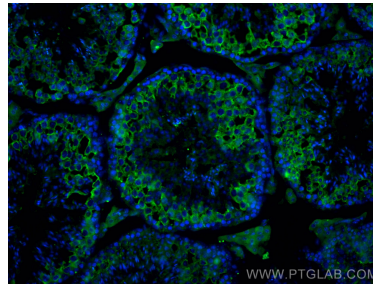
Immunofluorescent analysis of (4% PFA) fixed mouse testis tissue using BOULE antibody (13720-1-AP) at dilution of 1:200 and CoraLite®488-Conjugated AffiniPure Goat Anti-Rabbit IgG(H+L). This data was developed using the same antibody clone with 13720-1-PBS in a different storage buffer formulation.



IP result of anti-BOULE (IP:13720-1-AP, 4ug; Detection:13720-1-AP 1:1000) with mouse testis tissue lysate 4000ug. This data was developed using the same antibody clone with 13720-1-PBS in a different storage buffer formulation.



Immunohistochemical analysis of paraffin-embedded mouse testis tissue slide using 13720-1-AP (BOULE antibody) at dilution of 1:2000 (under 40x lens). Heat mediated antigen retrieval with Tris-EDTA buffer (pH 9.0). This data was developed using the same antibody clone with 13720-1-PBS in a different storage buffer formulation.



Immunofluorescent analysis of (4% PFA) fixed frozen OCT-embedded mouse testis tissue using 13720-1-AP (BOULE antibody) at dilution of 1:400 and CoraLite488-Conjugated AffiniPure Goat Anti-Rabbit IgG(H+L). This data was developed using the same antibody clone with 13720-1-PBS in a different storage buffer formulation.