

For Research Use Only

KERA Polyclonal antibody

Catalog Number:13728-1-AP



Basic Information

Catalog Number:	13728-1-AP	GenBank Accession Number:	BC032667	Purification Method:	Antigen affinity purification
Size:	150ul , Concentration: 650 ug/ml by Nanodrop;	GeneID (NCBI):	11081	Recommended Dilutions:	WB 1:500-1:1000
Source:	Rabbit	UNIPROT ID:	O60938		
Isotype:	IgG	Full Name:	keratocan		
Immunogen Catalog Number:	AG4689	Calculated MW:	352 aa, 41 kDa		
		Observed MW:	40-50 kDa		

Applications

Tested Applications:	WB, ELISA	Positive Controls:	WB : U-251 cells,
Species Specificity:	human		

Background Information

Keratocan and Lumican are the predominant class II SLRPs (Small leucine-rich proteoglycans) in the corneal stroma. While not totally corneal-specific together these SLRPs are excellent biomarkers for the tissue. Mutant mice deficient for keratocan expression have transparent but thin corneal stromas with a mild increase in collagen fibril diameter with no further abnormalities. In humans, mutations in the keratocan gene are associated with a flattened cornea in a rare condition known as cornea plana. The relative specificity of keratocan to corneal keratocytes has been useful for tissue-specific targeting for genetic manipulation of the corneal stroma. (PMID: 32663498)

Storage

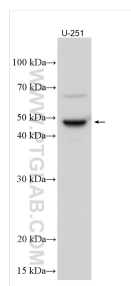
Storage:
Store at -20°C. Stable for one year after shipment.
Storage Buffer:
PBS with 0.02% sodium azide and 50% glycerol pH 7.3.
Aliquoting is unnecessary for -20°C storage

*** 20ul sizes contain 0.1% BSA

For technical support and original validation data for this product please contact:
T: 1 (888) 4PTGLAB (1-888-478-4522) (toll free in USA), or 1(312) 455-8498 (outside USA)
E: proteintech@ptglab.com
W: ptglab.com

This product is exclusively available under Proteintech Group brand and is not available to purchase from any other manufacturer.

Selected Validation Data



U-251 cells were subjected to SDS PAGE followed by western blot with 13728-1-AP (KERA antibody) at dilution of 1:500 incubated at room temperature for 1.5 hours.