

For Research Use Only

# MTG1 Polyclonal antibody

Catalog Number: 13742-1-AP **2 Publications**



## Basic Information

<b>Catalog Number:</b> 13742-1-AP	<b>GenBank Accession Number:</b> BC035721	<b>Purification Method:</b> Antigen affinity purification
<b>Size:</b> 150ul , Concentration: 300 ug/ml by Nanodrop and 173 ug/ml by Bradford method using BSA as the standard;	<b>GeneID (NCBI):</b> 92170	<b>Recommended Dilutions:</b> WB 1:1000-1:4000 IF/ICC 1:20-1:200
<b>Source:</b> Rabbit	<b>UNIPROT ID:</b> Q9BT17	
<b>Isotype:</b> IgG	<b>Full Name:</b> mitochondrial GTPase 1 homolog (S. cerevisiae)	
<b>Immunogen Catalog Number:</b> AG4681	<b>Calculated MW:</b> 300 aa, 33 kDa	
	<b>Observed MW:</b> 37 kDa	

## Applications

<b>Tested Applications:</b> WB, IF/ICC, ELISA	<b>Positive Controls:</b>
<b>Cited Applications:</b> WB	<b>WB :</b> human brain tissue, human liver tissue
<b>Species Specificity:</b> human	<b>IF/ICC :</b> SH-SY5Y cells,
<b>Cited Species:</b> human	

## Notable Publications

Author	Pubmed ID	Journal	Application
Elena Lavdovskaia	30085210	Nucleic Acids Res	WB
Liang Wang	37971521	Cell Mol Life Sci	WB

## Storage

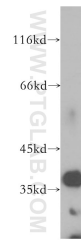
**Storage:**  
Store at -20°C. Stable for one year after shipment.  
**Storage Buffer:**  
PBS with 0.02% sodium azide and 50% glycerol pH 7.3.  
Aliquoting is unnecessary for -20°C storage

\*\*\* 20ul sizes contain 0.1% BSA

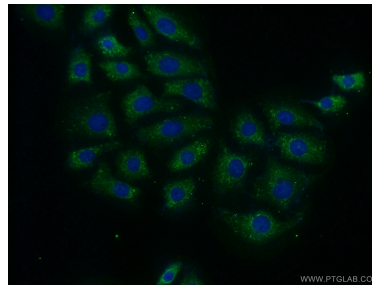
For technical support and original validation data for this product please contact:  
T: 1 (888) 4PTGLAB (1-888-478-4522) (toll free in USA), or 1(312) 455-8498 (outside USA)  
E: [proteintech@ptglab.com](mailto:proteintech@ptglab.com)  
W: [ptglab.com](http://ptglab.com)

This product is exclusively available under Proteintech Group brand and is not available to purchase from any other manufacturer.

## Selected Validation Data



human brain tissue were subjected to SDS PAGE followed by western blot with 13742-1-AP (MTG1 antibody) at dilution of 1:300 incubated at room temperature for 1.5 hours.



Immunofluorescent analysis of (-20°C Ethanol) fixed SH-SY5Y cells using 13742-1-AP (MTG1 antibody) at dilution of 1:50 and Alexa Fluor 488-conjugated Goat Anti-Rabbit IgG(H+L).