

For Research Use Only

KLF15 Polyclonal antibody

Catalog Number: 13749-1-AP

Featured Product

4 Publications



Basic Information

Catalog Number:

13749-1-AP

Size:

150ul, Concentration: 700 ug/ml by Nanodrop;

Source:

Rabbit

Isotype:

IgG

Immunogen Catalog Number:

AG4690

GenBank Accession Number:

BC036733

GeneID (NCBI):

28999

UNIPROT ID:

Q9UIH9

Full Name:

Kruppel-like factor 15

Calculated MW:

416 aa, 44 kDa

Observed MW:

44 kDa

Purification Method:

Antigen affinity purification

Recommended Dilutions:

WB 1:500-1:2000

Applications

Tested Applications:

WB, ELISA

Cited Applications:

WB, IF, ChIP

Species Specificity:

human, mouse

Cited Species:

human, mouse, rat

Positive Controls:

WB : MCF-7 cells, MDA-MB-231 cells, 3T3-L1 cells, C2C12 cells, mouse heart tissue, mouse kidney tissue, mouse liver tissue

Background Information

KLF15, a kidney-enriched Krüppel-like zinc finger-containing transcription factors, is a transcriptional activator that binds the CLCNKA promoter. The nuclear protein KLF15, is expressed primarily in liver, heart, skeletal muscle and kidney tissues but is not detected in lymphoid tissues or bone marrow. It is an important regulator of GLUT4 in both adipose and muscle tissues. Although the calculated molecular mass of KLF15 is 44 kDa, the apparent molecular mass on SDS-PAGE is 65 kDa due to the post-translational modifications (PMID:10982849, PMID:16615998).

Notable Publications

Author	Pubmed ID	Journal	Application
Jung Dae Young DY	24167585	PLoS One	WB
Pablo C Echeverría	26884463	Mol Cell Biol	WB
Noriaki Shimizu	21284984	Cell Metab	WB, ChIP

Storage

Storage:

Store at -20°C. Stable for one year after shipment.

Storage Buffer:

PBS with 0.02% sodium azide and 50% glycerol pH 7.3.

Aliquoting is unnecessary for -20°C storage

*** 20ul sizes contain 0.1% BSA

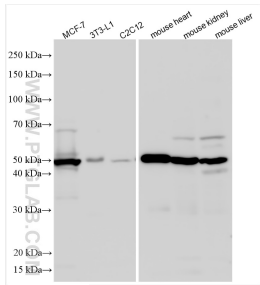
For technical support and original validation data for this product please contact:

T: 1 (888) 4PTGLAB (1-888-478-4522) (toll free in USA), or 1(312) 455-8498 (outside USA)

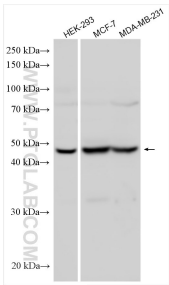
E: proteintech@ptglab.com
W: ptglab.com

This product is exclusively available under Proteintech Group brand and is not available to purchase from any other manufacturer.

Selected Validation Data



Various lysates were subjected to SDS PAGE followed by western blot with 13749-1-AP (KLF15 antibody) at dilution of 1:1000 incubated at room temperature for 1.5 hours.



Various lysates were subjected to SDS PAGE followed by western blot with 13749-1-AP (KLF15 antibody) at dilution of 1:1000 incubated at room temperature for 1.5 hours.