

For Research Use Only

CRYBB1 Polyclonal antibody

Catalog Number: 13760-1-AP

1 Publications



Basic Information

Catalog Number: 13760-1-AP	GenBank Accession Number: BC036790	Purification Method: Antigen affinity purification
Size: 150ul , Concentration: 300 µg/ml by Nanodrop;	GeneID (NCBI): 1414	Recommended Dilutions: WB 1:200-1:500
Source: Rabbit	Full Name: crystallin, beta B1	
Isotype: IgG	Calculated MW: 252 aa, 28 kDa	
Immunogen Catalog Number: AG4722	Observed MW: 30 kDa	

Applications

Tested Applications: WB, ELISA	Positive Controls: WB : MCF7 cells,
Cited Applications: WB	
Species Specificity: human	
Cited Species: rat	

Background Information

Notable Publications

Author	Pubmed ID	Journal	Application
Jing Li	36705056	FASEB J	WB

Storage

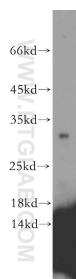
Storage:
Store at -20°C. Stable for one year after shipment.
Storage Buffer:
PBS with 0.02% sodium azide and 50% glycerol pH 7.3.
Aliquoting is unnecessary for -20°C storage

*** 20ul sizes contain 0.1% BSA

For technical support and original validation data for this product please contact:
T: 1 (888) 4PTGLAB (1-888-478-4522) (toll free in USA), or 1(312) 455-8498 (outside USA)
E: proteintech@ptglab.com
W: ptglab.com

This product is exclusively available under Proteintech Group brand and is not available to purchase from any other manufacturer.

Selected Validation Data



MCF7 cells were subjected to SDS PAGE followed by western blot with 13760-1-AP (CRYBB1 antibody) at dilution of 1:100 incubated at room temperature for 1.5 hours.