

For Research Use Only

TRAK2 Polyclonal antibody, PBS Only

Catalog Number: 13770-1-PBS



Basic Information

Catalog Number: 13770-1-PBS	GenBank Accession Number: BC040668	Purification Method: Antigen affinity purification
Size: 100ug , Concentration: 1 mg/ml by Nanodrop;	GeneID (NCBI): 66008	
Source: Rabbit	UNIPROT ID: O60296	
Isotype: IgG	Full Name: trafficking protein, kinesin binding 2	
Immunogen Catalog Number: AG4753	Calculated MW: 914 aa, 101 kDa	
	Observed MW: 101-106 kDa	

Applications

Tested Applications:
WB, IHC, IF/ICC, IP, Indirect ELISA

Species Specificity:
human, mouse, rat

Background Information

Trafficking kinesin-binding protein 2 (TRAK2) is a member of the TRAK family of kinesin adaptor proteins. In mammals, there are two members of the TRAK family, TRAK1 and TRAK2 (PMID: 25653102). TRAK1 and TRAK2 play roles in lysosomal and mitochondrial trafficking in cells. They function as kinesin adaptors linking kinesin heavy chain (KHC) to mitochondria (PMID: 28364549). TRAK2 has been found to act as a trafficking factor for the K⁺ channel Kir2.1 and γ -Aminobutyric acid type A (GABA_A) receptor (PMID: 16895905; 24122114).

Storage

Storage:
Store at -80°C.

Storage Buffer:
PBS Only

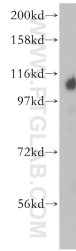
For technical support and original validation data for this product please contact:

T: 1 (888) 4PTGLAB (1-888-478-4522) (toll free in USA), or 1(312) 455-8498 (outside USA)

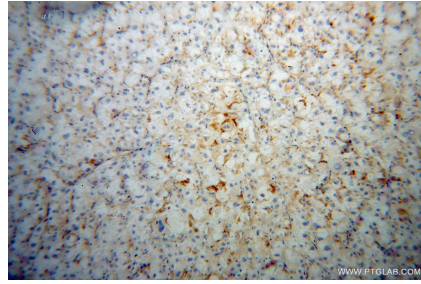
E: proteintech@ptglab.com
W: ptglab.com

This product is exclusively available under Proteintech Group brand and is not available to purchase from any other manufacturer.

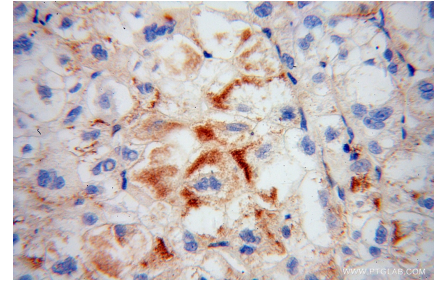
Selected Validation Data



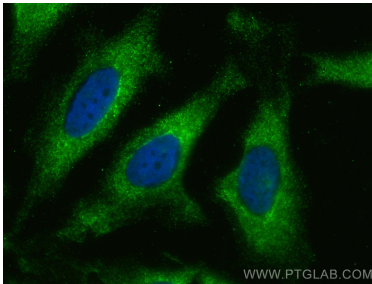
human liver tissue were subjected to SDS PAGE followed by western blot with 13770-1-AP (TRAK2 antibody) at dilution of 1:500 incubated at room temperature for 1.5 hours. This data was developed using the same antibody clone with 13770-1-PBS in a different storage buffer formulation.



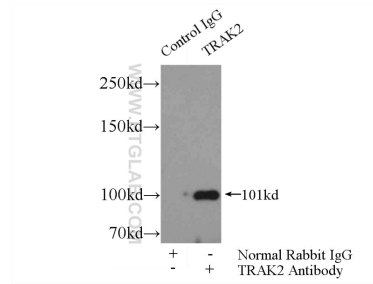
Immunohistochemical analysis of paraffin-embedded human liver cancer using 13770-1-AP (TRAK2 antibody) at dilution of 1:100 (under 10x lens). This data was developed using the same antibody clone with 13770-1-PBS in a different storage buffer formulation.



Immunohistochemical analysis of paraffin-embedded human liver cancer using 13770-1-AP (TRAK2 antibody) at dilution of 1:100 (under 40x lens). This data was developed using the same antibody clone with 13770-1-PBS in a different storage buffer formulation.



Immunofluorescent analysis of (-20°C Ethanol) fixed HeLa cells using TRAK2 antibody (13770-1-AP) at dilution of 1:200 and CoraLite®488-Conjugated AffiniPure Goat Anti-Rabbit IgG(H+L). This data was developed using the same antibody clone with 13770-1-PBS in a different storage buffer formulation.



IP result of anti-TRAK2 (IP:13770-1-AP, 4ug; Detection:13770-1-AP 1:500) with HepG2 cells lysate 4000ug. This data was developed using the same antibody clone with 13770-1-PBS in a different storage buffer formulation.