

For Research Use Only

# PCP2 Polyclonal antibody

Catalog Number: 13774-1-AP



## Basic Information

**Catalog Number:**

13774-1-AP

**Size:**

150ul , Concentration: 600 ug/ml by Nanodrop and 207 ug/ml by Bradford method using BSA as the standard;

**Source:**

Rabbit

**Isotype:**

IgG

**Immunogen Catalog Number:**

AG4759

**GenBank Accession Number:**

BC038715

**GeneID (NCBI):**

126006

**UNIPROT ID:**

Q8IVA1

**Full Name:**

Purkinje cell protein 2

**Calculated MW:**

136 aa, 15 kDa

**Purification Method:**

Antigen affinity purification

**Recommended Dilutions:**

IHC 1:50-1:500

IF-P 1:50-1:500

## Applications

**Tested Applications:**

IHC, IF-P, ELISA

**Species Specificity:**

human, mouse

**Note-IHC: suggested antigen retrieval with TE buffer pH 9.0; (\*) Alternatively, antigen retrieval may be performed with citrate buffer pH 6.0**

**Positive Controls:**

IHC : mouse cerebellum tissue, mouse eye tissue

IF-P : mouse cerebellum tissue,

## Background Information

Pcp2 is uniquely expressed in cerebellar Purkinje cells and in retinal bipolar neurons, and it may function as a cell-type specific modulator for G protein-mediated cell signaling.

## Storage

**Storage:**

Store at -20°C. Stable for one year after shipment.

**Storage Buffer:**

PBS with 0.02% sodium azide and 50% glycerol pH 7.3.

Aliquoting is unnecessary for -20°C storage

\*\*\* 20ul sizes contain 0.1% BSA

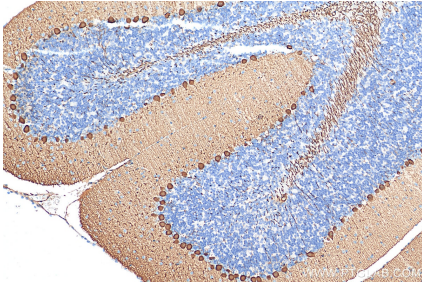
For technical support and original validation data for this product please contact:

T: 1 (888) 4PTGLAB (1-888-478-4522) (toll free in USA), or 1(312) 455-8498 (outside USA)

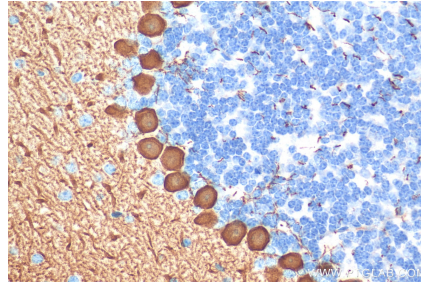
E: [proteintech@ptglab.com](mailto:proteintech@ptglab.com)  
W: [ptglab.com](http://ptglab.com)

This product is exclusively available under Proteintech Group brand and is not available to purchase from any other manufacturer.

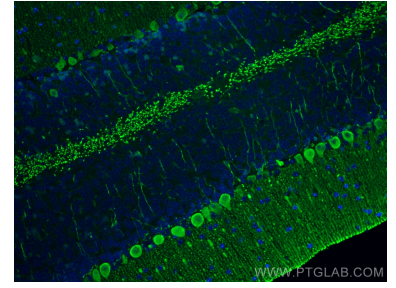
## Selected Validation Data



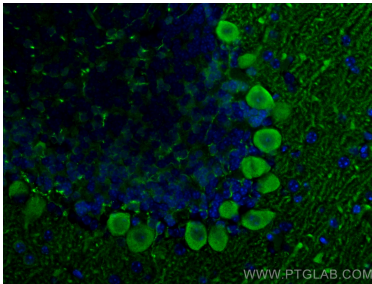
Immunohistochemical analysis of paraffin-embedded mouse cerebellum tissue slide using 13774-1-AP (PCP2 antibody) at dilution of 1:200 (under 10x lens). Heat mediated antigen retrieval with Tris-EDTA buffer (pH 9.0).



Immunohistochemical analysis of paraffin-embedded mouse cerebellum tissue slide using 13774-1-AP (PCP2 antibody) at dilution of 1:200 (under 40x lens). Heat mediated antigen retrieval with Tris-EDTA buffer (pH 9.0).



Immunofluorescent analysis of (4% PFA) fixed mouse cerebellum tissue using PCP2 antibody (13774-1-AP) at dilution of 1:200 and CoraLite®488-Conjugated AffiniPure Goat Anti-Rabbit IgG(H+L).



Immunofluorescent analysis of (4% PFA) fixed mouse cerebellum tissue using PCP2 antibody (13774-1-AP) at dilution of 1:200 and CoraLite®488-Conjugated AffiniPure Goat Anti-Rabbit IgG(H+L).