

For Research Use Only

PCP2 Polyclonal antibody, PBS Only

Catalog Number: 13774-1-PBS



Basic Information

Catalog Number:

13774-1-PBS

Size:

100ug, Concentration: 1 mg/ml by Nanodrop;

Source:

Rabbit

Isotype:

IgG

Immunogen Catalog Number:

AG4759

GenBank Accession Number:

BC038715

GeneID (NCBI):

126006

UNIPROT ID:

Q8IVA1

Full Name:

Purkinje cell protein 2

Calculated MW:

136 aa, 15 kDa

Purification Method:

Antigen affinity purification

Applications

Tested Applications:

IHC, IF-P, Indirect ELISA

Species Specificity:

human, mouse

Background Information

Pcp2 is uniquely expressed in cerebellar Purkinje cells and in retinal bipolar neurons, and it may function as a cell-type specific modulator for G protein-mediated cell signaling.

Storage

Storage:

Store at -80°C.

Storage Buffer:

PBS only, pH7.3

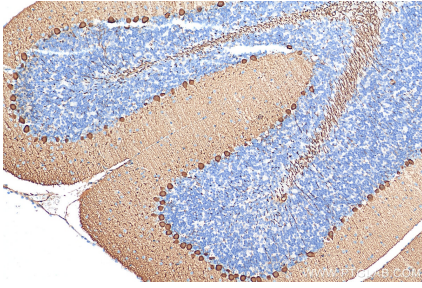
For technical support and original validation data for this product please contact:

T: 1 (888) 4PTGLAB (1-888-478-4522) (toll free in USA), or 1(312) 455-8498 (outside USA)

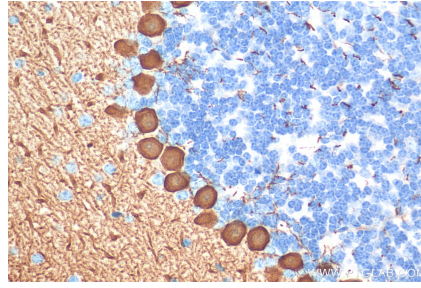
E: proteintech@ptglab.com
W: ptglab.com

This product is exclusively available under Proteintech Group brand and is not available to purchase from any other manufacturer.

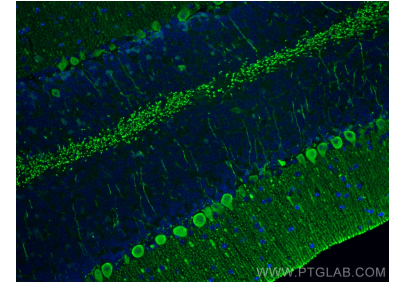
Selected Validation Data



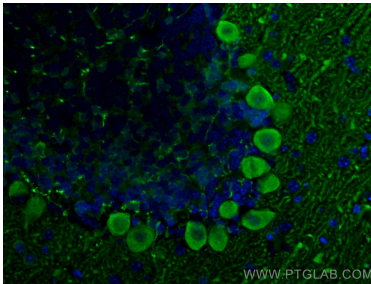
Immunohistochemical analysis of paraffin-embedded mouse cerebellum tissue slide using 13774-1-AP (PCP2 antibody) at dilution of 1:200 (under 10x lens). Heat mediated antigen retrieval with Tris-EDTA buffer (pH 9.0). This data was developed using the same antibody clone with 13774-1-PBS in a different storage buffer formulation.



Immunohistochemical analysis of paraffin-embedded mouse cerebellum tissue slide using 13774-1-AP (PCP2 antibody) at dilution of 1:200 (under 40x lens). Heat mediated antigen retrieval with Tris-EDTA buffer (pH 9.0). This data was developed using the same antibody clone with 13774-1-PBS in a different storage buffer formulation.



Immunofluorescent analysis of (4% PFA) fixed mouse cerebellum tissue using PCP2 antibody (13774-1-AP) at dilution of 1:200 and CoraLite®488-Conjugated AffiniPure Goat Anti-Rabbit IgG(H+L). This data was developed using the same antibody clone with 13774-1-PBS in a different storage buffer formulation.



Immunofluorescent analysis of (4% PFA) fixed mouse cerebellum tissue using PCP2 antibody (13774-1-AP) at dilution of 1:200 and CoraLite®488-Conjugated AffiniPure Goat Anti-Rabbit IgG(H+L). This data was developed using the same antibody clone with 13774-1-PBS in a different storage buffer formulation.