

For Research Use Only

CPNE6 Polyclonal antibody

Catalog Number: 13782-1-AP

3 Publications



Basic Information

Catalog Number:

13782-1-AP

Size:

150ul, Concentration: 133 ug/ml by Nanodrop and 133 ug/ml by Bradford method using BSA as the standard;

Source:

Rabbit

Isotype:

IgG

Immunogen Catalog Number:

AG4789

GenBank Accession Number:

BC018046

GeneID (NCBI):

9362

UNIPROT ID:

O95741

Full Name:

copine VI (neuronal)

Calculated MW:

557 aa, 62 kDa

Observed MW:

65 kDa

Purification Method:

Antigen affinity purification

Recommended Dilutions:

WB 1:2000-1:12000

IHC 1:250-1:1000

Applications

Tested Applications:

WB, IHC, ELISA

Cited Applications:

WB, IP, IF, ColP

Species Specificity:

human, mouse, rat

Cited Species:

human, rat, mouse

Note-IHC: suggested antigen retrieval with TE buffer pH 9.0; (*) Alternatively, antigen retrieval may be performed with citrate buffer pH 6.0

Positive Controls:

WB : mouse brain tissue, rat brain tissue

IHC : rat dorsal root ganglion tissue,

Background Information

Copines are a family of evolutionarily conserved calcium-dependent phospholipid-binding proteins (PMID: 9430674). They contain two Ca(2+)- and phospholipid-binding domains known as C2 domains. Copines are potentially involved in regulating membrane trafficking and in protein-protein interactions.

Notable Publications

Author	Pubmed ID	Journal	Application
Binglin Zhu	26723968	J Neurol Sci	WB,IF
Jing Zhi Anson Tan	37979168	Cell Rep	IP,WB,ColP
Xiaoxia Li	38025258	Front Mol Neurosci	WB

Storage

Storage:

Store at -20°C. Stable for one year after shipment.

Storage Buffer:

PBS with 0.02% sodium azide and 50% glycerol pH 7.3.

Aliquoting is unnecessary for -20°C storage

*** 20ul sizes contain 0.1% BSA

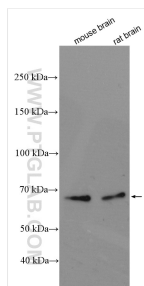
For technical support and original validation data for this product please contact:

T: 1 (888) 4PTGLAB (1-888-478-4522) (toll free in USA), or 1(312) 455-8498 (outside USA)

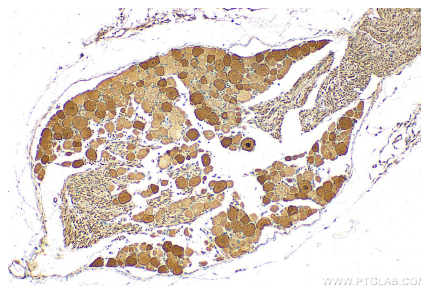
E: proteintech@ptglab.com
W: ptglab.com

This product is exclusively available under Proteintech Group brand and is not available to purchase from any other manufacturer.

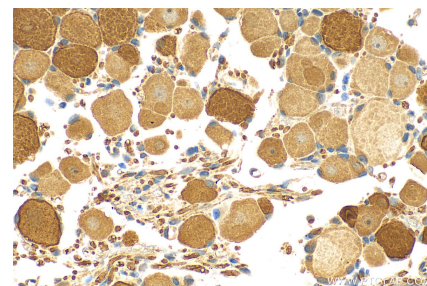
Selected Validation Data



Various lysates were subjected to SDS PAGE followed by western blot with 13782-1-AP (CPNE6 antibody) at dilution of 1:6000 incubated at room temperature for 1.5 hours.



Immunohistochemical analysis of paraffin-embedded rat dorsal root ganglion tissue slide using 13782-1-AP (CPNE6 antibody) at dilution of 1:500 (under 10x lens). Heat mediated antigen retrieval with Tris-EDTA buffer (pH 9.0).



Immunohistochemical analysis of paraffin-embedded rat dorsal root ganglion tissue slide using 13782-1-AP (CPNE6 antibody) at dilution of 1:500 (under 40x lens). Heat mediated antigen retrieval with Tris-EDTA buffer (pH 9.0).