

For Research Use Only

PDE1C Polyclonal antibody, PBS Only

Catalog Number:13785-1-PBS



Basic Information

Catalog Number:

13785-1-PBS

Size:

100ug, Concentration: 1 mg/ml by Nanodrop;

Source:

Rabbit

Isotype:

IgG

Immunogen Catalog Number:

AG4798

GenBank Accession Number:

BC022525

GeneID (NCBI):

5137

UNIPROT ID:

Q14123

Full Name:

phosphodiesterase 1C, calmodulin-dependent 70kDa

Calculated MW:

634 aa, 72 kDa

Observed MW:

68 kDa

Purification Method:

Antigen affinity purification

Applications

Tested Applications:

WB, IHC, IP, Indirect ELISA

Species Specificity:

human, mouse

Background Information

Cyclic nucleotide phosphodiesterases (PDEs) catalyze hydrolysis of the cyclic nucleotides cAMP and cGMP to the corresponding nucleoside 5-prime-monophosphates. PDE1C, is calmodulin-dependent PDEs (CaM-PDEs) that are stimulated by a calcium-calmodulin complex. Expression of PDE1C may be an important component in signal transduction pathways mediated by calcium that permit cell cycle traverse and proliferation(PMID:9366577). It has 2 isoforms produced by alternative splicing.

Storage

Storage:

Store at -80°C.

Storage Buffer:

PBS only, pH7.3

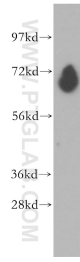
For technical support and original validation data for this product please contact:

T: 1 (888) 4PTGLAB (1-888-478-4522) (toll free in USA), or 1(312) 455-8498 (outside USA)

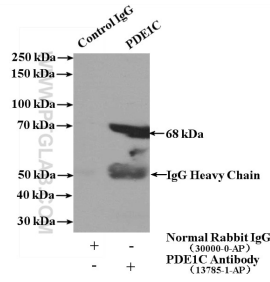
E: proteintech@ptglab.com
W: ptglab.com

This product is exclusively available under Proteintech Group brand and is not available to purchase from any other manufacturer.

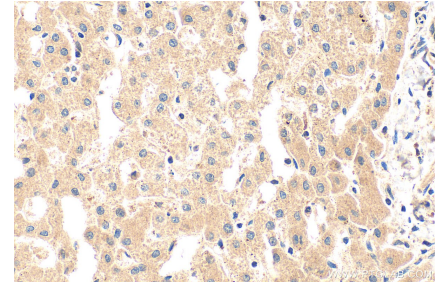
Selected Validation Data



human heart tissue were subjected to SDS PAGE followed by western blot with 13785-1-AP (PDE1C antibody) at dilution of 1:500 incubated at room temperature for 1.5 hours. This data was developed using the same antibody clone with 13785-1-PBS in a different storage buffer formulation.



IP result of anti-PDE1C (IP:13785-1-AP, 4ug; Detection:13785-1-AP 1:500) with mouse heart tissue lysate 4000ug. This data was developed using the same antibody clone with 13785-1-PBS in a different storage buffer formulation.



Immunohistochemical analysis of paraffin-embedded human liver tissue slide using 13785-1-AP (PDE1C antibody) at dilution of 1:100 (under 40x lens). Heat mediated antigen retrieval with Tris-EDTA buffer (pH 9.0). This data was developed using the same antibody clone with 13785-1-PBS in a different storage buffer formulation.