

For Research Use Only

EAF1 Polyclonal antibody

Catalog Number: 13787-1-AP **5 Publications**



Basic Information

Catalog Number: 13787-1-AP	GenBank Accession Number: BC041329	Purification Method: Antigen affinity purification
Size: 150ul , Concentration: 350 µg/ml by Nanodrop and 233 µg/ml by Bradford method using BSA as the standard;	GeneID (NCBI): 85403	Recommended Dilutions: WB 1:500-1:1000 IP 0.5-4.0 ug for 1.0-3.0 mg of total protein lysate IF 1:20-1:200
Source: Rabbit	Full Name: ELL associated factor 1	
Isotype: IgG	Calculated MW: 268 aa, 29 kDa	
Immunogen Catalog Number: AG4804	Observed MW: 43 kDa	

Applications

Tested Applications: IF, IP, WB, ELISA	Positive Controls: WB : K-562 cells, HeLa cells, mouse brain tissue IP : HeLa cells, IF : SH-SY5Y cells,
Cited Applications: IP, WB	
Species Specificity: human, mouse, rat	
Cited Species: human, mouse	

Background Information

ELL associated factor 1 and ELL associated factor 2 (EAF1/2 factors) are reported to play important roles in tumor suppression and embryogenesis. The tumor suppressor EAF2 is regulated by androgen signaling and associated with prostate cancer. Eaf factors have been revealed to modulate mesoderm and neural patterning by inhibiting canonical Wnt signaling, and high activity of canonical Wnt/ β -catenin is revealed in eafs morphants (PMID: 23364330). Catalog# 13787-1-AP is a rabbit polyclonal antibody raised against the full-length of human EAF1.

Notable Publications

Author	Pubmed ID	Journal	Application
Jing-Xia Liu	28887217	Biochim Biophys Acta	WB
Bijan Sobhian	20471949	Mol Cell	WB
Ping Liu	34215846	Cell Death Differ	WB

Storage

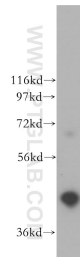
Storage:
Store at -20°C. Stable for one year after shipment.
Storage Buffer:
PBS with 0.02% sodium azide and 50% glycerol pH 7.3.
Aliquoting is unnecessary for -20°C storage

*** 20ul sizes contain 0.1% BSA

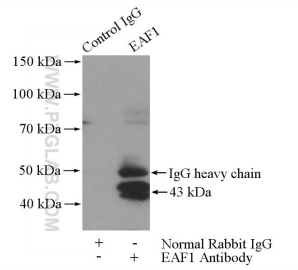
For technical support and original validation data for this product please contact:
T: 1 (888) 4PTGLAB (1-888-478-4522) (toll free in USA), or 1(312) 455-8498 (outside USA)
E: proteintech@ptglab.com
W: ptglab.com

This product is exclusively available under Proteintech Group brand and is not available to purchase from any other manufacturer.

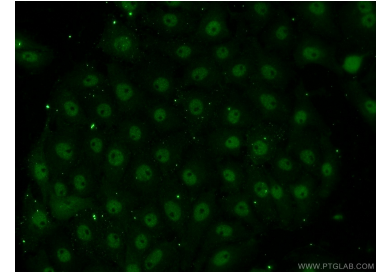
Selected Validation Data



K-562 cells were subjected to SDS PAGE followed by western blot with 13787-1-AP (EAF1 antibody) at dilution of 1:500 incubated at room temperature for 1.5 hours.



IP Result of anti-EAF1 (IP:13787-1-AP, 4 μ g; Detection:13787-1-AP 1:500) with HeLa cells lysate 1200 μ g.



Immunofluorescent analysis of SH-SY5Y cells using 13787-1-AP (EAF1 antibody) at dilution of 1:50 and Alexa Fluor 488-conjugated AffiniPure Goat Anti-Rabbit IgG(H+L).