

For Research Use Only

# Radixin Polyclonal antibody

Catalog Number: 13790-1-AP **1 Publications**



## Basic Information

<b>Catalog Number:</b> 13790-1-AP	<b>GenBank Accession Number:</b> BC047109	<b>Purification Method:</b> Antigen affinity purification
<b>Size:</b> 150ul , Concentration: 700 µg/ml by Nanodrop and 313 µg/ml by Bradford method using BSA as the standard;	<b>GeneID (NCBI):</b> 5962	<b>Recommended Dilutions:</b> WB 1:500-1:2400 IHC 1:20-1:200 IF 1:20-1:200
<b>Source:</b> Rabbit	<b>Full Name:</b> radixin	
<b>Isotype:</b> IgG	<b>Calculated MW:</b> 583 aa, 68 kDa	
<b>Immunogen Catalog Number:</b> AG4813	<b>Observed MW:</b> 75 kDa	

## Applications

<b>Tested Applications:</b> FC, IF, IHC, WB, ELISA	<b>Positive Controls:</b> WB : mouse pancreas tissue, HEK-293 cells, Y79 cells IHC : human pancreas cancer tissue, human liver cancer tissue, human pancreas tissue IF : MCF-7 cells,
<b>Cited Applications:</b> IF	
<b>Species Specificity:</b> human, mouse, rat	
<b>Cited Species:</b> mouse	

**Note-IHC: suggested antigen retrieval with TE buffer pH 9.0; (\*) Alternatively, antigen retrieval may be performed with citrate buffer pH 6.0**

## Background Information

Radixin belongs to the ezrin-radixin-moesin (ERM) family of proteins which act as cross-linkers between membrane and actin cytoskeleton. ERM proteins provide structural links to strengthen the cell cortex and facilitate several key cellular processes, including membrane dynamics, substrate adhesion, cell survival, cell adhesion, and motility. The function of ERM proteins is highly reliant on phosphorylation induced conformational changes in response to chemokine and antigen stimulation.

## Notable Publications

Author	Pubmed ID	Journal	Application
Mark Pines	28082118	Am J Pathol	IF

## Storage

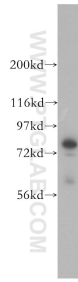
**Storage:**  
Store at -20°C. Stable for one year after shipment.  
**Storage Buffer:**  
PBS with 0.02% sodium azide and 50% glycerol pH 7.3.  
Aliquoting is unnecessary for -20°C storage

\*\*\* 20ul sizes contain 0.1% BSA

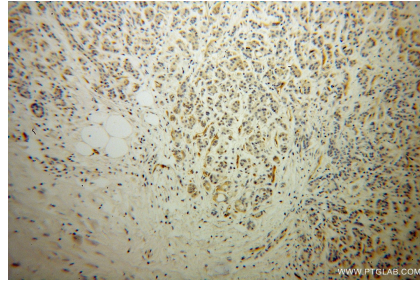
For technical support and original validation data for this product please contact:  
T: 1 (888) 4PTGLAB (1-888-478-4522) (toll free in USA), or 1(312) 455-8498 (outside USA)  
E: proteintech@ptglab.com  
W: ptglab.com

This product is exclusively available under Proteintech Group brand and is not available to purchase from any other manufacturer.

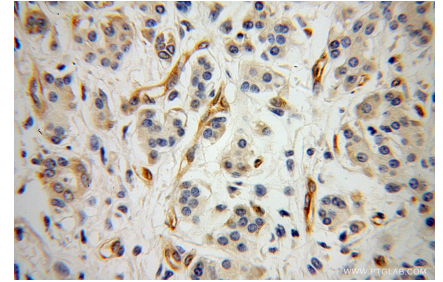
## Selected Validation Data



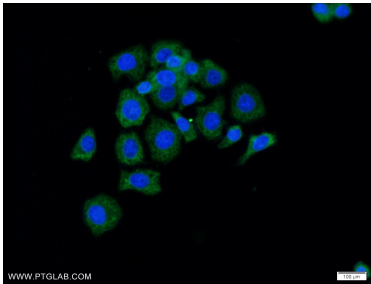
mouse pancreas tissue were subjected to SDS PAGE followed by western blot with 13790-1-AP (Radixin antibody) at dilution of 1:1000 incubated at room temperature for 1.5 hours.



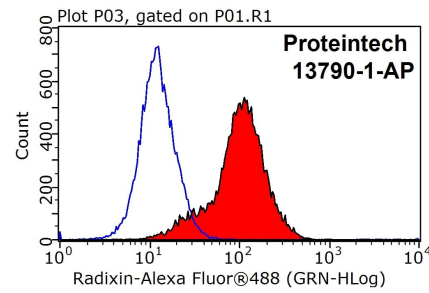
Immunohistochemical analysis of paraffin-embedded human pancreas cancer using 13790-1-AP (Radixin antibody) at dilution of 1:100 (under 10x lens).



Immunohistochemical analysis of paraffin-embedded human pancreas cancer using 13790-1-AP (Radixin antibody) at dilution of 1:100 (under 40x lens).



Immunofluorescent analysis of MCF-7 cells using 13790-1-AP (Radixin antibody) at dilution of 1:50 and Alexa Fluor 488-conjugated AffiniPure Goat Anti-Rabbit IgG(H+L).



1x10<sup>6</sup> MCF-7 cells were stained with 0.2ug Radixin antibody (13790-1-AP, red) and control antibody (blue). Fixed with 90% MeOH blocked with 3% BSA (30 min). Alexa Fluor 488-conjugated AffiniPure Goat Anti-Rabbit IgG(H+L) with dilution 1:1000.