

For Research Use Only

# ELP2 Polyclonal antibody

Catalog Number: 13793-1-AP



## Basic Information

<b>Catalog Number:</b> 13793-1-AP	<b>GenBank Accession Number:</b> BC032553	<b>Purification Method:</b> Antigen affinity purification
<b>Size:</b> 150ul , Concentration: 500 ug/ml by Nanodrop and 353 ug/ml by Bradford method using BSA as the standard;	<b>GeneID (NCBI):</b> 55250	<b>Recommended Dilutions:</b> IHC 1:250-1:1000
<b>Source:</b> Rabbit	<b>UNIPROT ID:</b> Q6IA86	
<b>Isotype:</b> IgG	<b>Full Name:</b> elongation protein 2 homolog (S. cerevisiae)	
<b>Immunogen Catalog Number:</b> AG4581	<b>Calculated MW:</b> 826 aa, 93 kDa	

## Applications

<b>Tested Applications:</b> IHC, ELISA	<b>Positive Controls:</b>
<b>Species Specificity:</b> human, mouse, rat	<b>IHC :</b> human stomach cancer tissue, mouse liver tissue, human colon cancer tissue, mouse kidney tissue, rat kidney tissue, rat liver tissue
<b>Note-IHC: suggested antigen retrieval with TE buffer pH 9.0; (*) Alternatively, antigen retrieval may be performed with citrate buffer pH 6.0</b>	

## Background Information

ELP2 is a component of the elongator complex which is required for multiple tRNA modifications. The elongator complex catalyzes the formation of carboxymethyluridine in the wobble base at position 34 in tRNAs.

## Storage

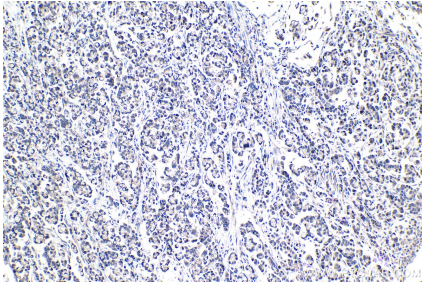
**Storage:**  
Store at -20°C. Stable for one year after shipment.  
**Storage Buffer:**  
PBS with 0.02% sodium azide and 50% glycerol pH 7.3.  
Aliquoting is unnecessary for -20°C storage

\*\*\* 20ul sizes contain 0.1% BSA

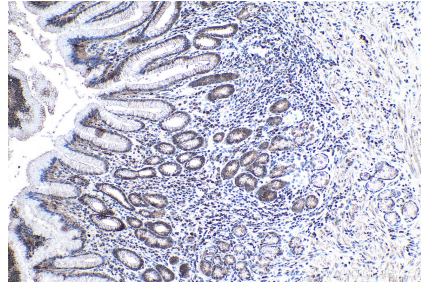
For technical support and original validation data for this product please contact:  
T: 1 (888) 4PTGLAB (1-888-478-4522) (toll free in USA), or 1(312) 455-8498 (outside USA)  
E: [proteintech@ptglab.com](mailto:proteintech@ptglab.com)  
W: [ptglab.com](http://ptglab.com)

This product is exclusively available under Proteintech Group brand and is not available to purchase from any other manufacturer.

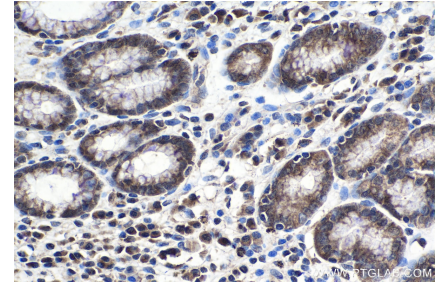
## Selected Validation Data



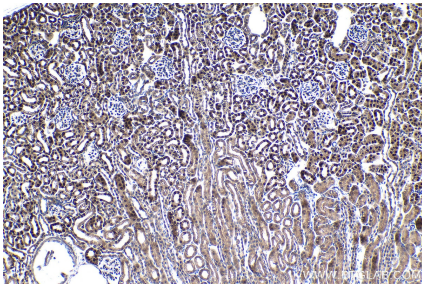
Immunohistochemical analysis of paraffin-embedded human colon cancer tissue slide using 13793-1-AP (ELP2 antibody) at dilution of 1:500 (under 10x lens). Heat mediated antigen retrieval with Tris-EDTA buffer (pH 9.0).



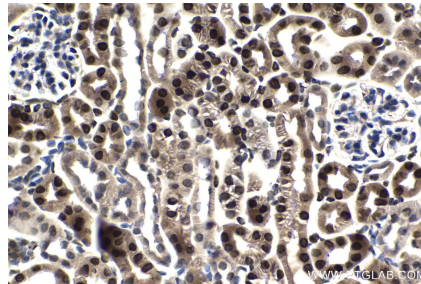
Immunohistochemical analysis of paraffin-embedded human stomach cancer tissue slide using 13793-1-AP (ELP2 antibody) at dilution of 1:500 (under 10x lens). Heat mediated antigen retrieval with Tris-EDTA buffer (pH 9.0).



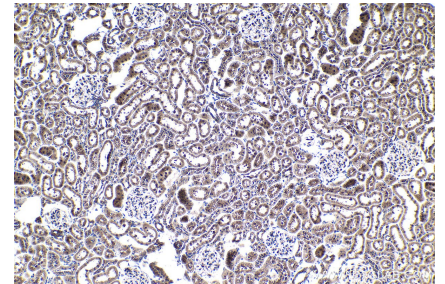
Immunohistochemical analysis of paraffin-embedded human stomach cancer tissue slide using 13793-1-AP (ELP2 antibody) at dilution of 1:500 (under 40x lens). Heat mediated antigen retrieval with Tris-EDTA buffer (pH 9.0).



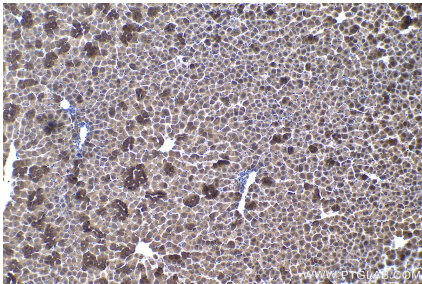
Immunohistochemical analysis of paraffin-embedded mouse kidney tissue slide using 13793-1-AP (ELP2 antibody) at dilution of 1:500 (under 10x lens). Heat mediated antigen retrieval with Tris-EDTA buffer (pH 9.0).



Immunohistochemical analysis of paraffin-embedded mouse kidney tissue slide using 13793-1-AP (ELP2 antibody) at dilution of 1:500 (under 40x lens). Heat mediated antigen retrieval with Tris-EDTA buffer (pH 9.0).



Immunohistochemical analysis of paraffin-embedded rat kidney tissue slide using 13793-1-AP (ELP2 antibody) at dilution of 1:500 (under 10x lens). Heat mediated antigen retrieval with Tris-EDTA buffer (pH 9.0).



Immunohistochemical analysis of paraffin-embedded rat liver tissue slide using 13793-1-AP (ELP2 antibody) at dilution of 1:500 (under 10x lens). Heat mediated antigen retrieval with Tris-EDTA buffer (pH 9.0).