

GAS6 Polyclonal antibody

Catalog Number: 13795-1-AP

8 Publications

Basic Information

Catalog Number: 13795-1-AP	GenBank Accession Number: BC038984	Purification Method: Antigen affinity purification
Size: 150ul , Concentration: 750 µg/ml by Nanodrop and 367 µg/ml by Bradford method using BSA as the standard;	GeneID (NCBI): 2621	Recommended Dilutions: WB 1:500-1:1000 IHC 1:50-1:500 IF 1:50-1:500
Source: Rabbit	Full Name: growth arrest-specific 6	
Isotype: IgG	Calculated MW: 678 aa, 75 kDa	
Immunogen Catalog Number: AG4617	Observed MW: 75 kDa	

Applications

Tested Applications: IF, IHC, WB, ELISA	Positive Controls:
Cited Applications: IF, IHC, WB	WB : human urine sample, DU 145 cells, mouse heart tissue, rat heart tissue
Species Specificity: human	IHC : human lung cancer tissue, human spleen tissue
Cited Species: human, rat, mouse	IF : HeLa cells,

Note-IHC: suggested antigen retrieval with TE buffer pH 9.0; (*) Alternatively, antigen retrieval may be performed with citrate buffer pH 6.0

Background Information

Growth arrest-specific protein 6 (GAS6) is also named as AXLLG. GAS6/AXL signaling plays a role in various processes such as endothelial cell survival during acidification by preventing apoptosis, optimal cytokine signaling during human natural killer cell development, hepatic regeneration, gonadotropin-releasing hormone neuron survival and migration, platelet activation, or regulation of thrombotic responses (PMID:12364394, PMID:18840707). It can bridge virus envelope phosphatidylserine to the TAM receptor tyrosine kinase Axl to mediate viral entry by apoptotic mimicry (PMID:21501828).

Notable Publications

Author	Pubmed ID	Journal	Application
Yingying Shen	30289981	Int J Cancer	WB
Zhen Wang	35546091	Transplantation	WB
Hua Qian	32369236	FASEB J	WB

Storage

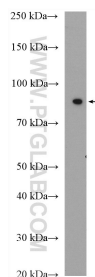
Storage:
Store at -20°C. Stable for one year after shipment.
Storage Buffer:
PBS with 0.02% sodium azide and 50% glycerol pH 7.3.
Aliquoting is unnecessary for -20°C storage

*** 20ul sizes contain 0.1% BSA

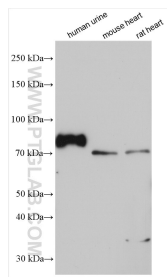
For technical support and original validation data for this product please contact:
T: 1 (888) 4PTGLAB (1-888-478-4522) (toll free in USA), or 1(312) 455-8498 (outside USA)
E: proteintech@ptglab.com
W: ptglab.com

This product is exclusively available under Proteintech Group brand and is not available to purchase from any other manufacturer.

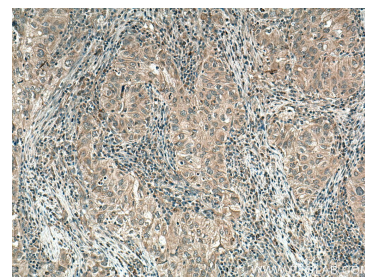
Selected Validation Data



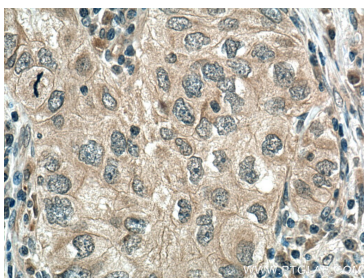
human urine sample were subjected to SDS PAGE followed by western blot with 13795-1-AP (GAS6 antibody) at dilution of 1:600 incubated at room temperature for 1.5 hours.



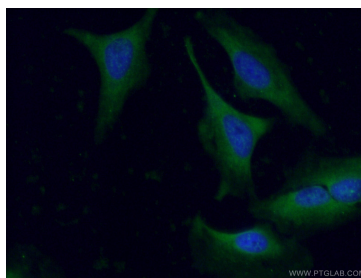
Various lysates were subjected to SDS PAGE followed by western blot with 13795-1-AP (GAS6 antibody) at dilution of 1:1500 incubated at room temperature for 1.5 hours.



Immunohistochemical analysis of paraffin-embedded human lung cancer tissue slide using 13795-1-AP (GAS6 antibody) at dilution of 1:200 (under 10x lens). Heat mediated antigen retrieval with Tris-EDTA buffer (pH 9.0).



Immunohistochemical analysis of paraffin-embedded human lung cancer tissue slide using 13795-1-AP (GAS6 antibody) at dilution of 1:200 (under 40x lens). Heat mediated antigen retrieval with Tris-EDTA buffer (pH 9.0).



Immunofluorescent analysis of (-20°C Ethanol) fixed HeLa cells using 13795-1-AP (GAS6 antibody) at dilution of 1:50 and Alexa Fluor 488-Conjugated AffiniPure Goat Anti-Rabbit IgG(H+L).