

For Research Use Only

# TKTL1 Polyclonal antibody

Catalog Number: 13819-1-AP



## Basic Information

<b>Catalog Number:</b> 13819-1-AP	<b>GenBank Accession Number:</b> BC025382	<b>Purification Method:</b> Antigen affinity purification
<b>Size:</b> 150ul , Concentration: 450 µg/ml by Nanodrop;	<b>GeneID (NCBI):</b> 8277	<b>Recommended Dilutions:</b> WB 1:500-1:2000
<b>Source:</b> Rabbit	<b>Full Name:</b> transketolase-like 1	
<b>Isotype:</b> IgG	<b>Calculated MW:</b> 65 kDa	
<b>Immunogen Catalog Number:</b> AG4913	<b>Observed MW:</b> 65 kDa	

## Applications

<b>Tested Applications:</b> WB, ELISA	<b>Positive Controls:</b> WB : HeLa cells, HepG2 cells, MCF-7 cells, U-251 cells
<b>Species Specificity:</b> human	

## Background Information

Transketolase (TKT) is an enzyme that is ubiquitously expressed in all living organisms and has been identified as an important regulator of cancer. The TKT family includes the TKT gene and two TKT-like (TKTL) genes; TKTL1 and TKTL2. The basic components ribose-5-phosphate and acetyl-CoA, which are formed by TKTL1, provide essential building blocks for the formation of new cells. TKTL1 also allows survival in the absence of oxygen (hypoxia). TKTL1 also has been shown to be involved in regulating neuronal development in the cerebral cortex.

## Storage

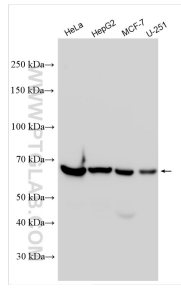
**Storage:**  
Store at -20°C. Stable for one year after shipment.  
**Storage Buffer:**  
PBS with 0.02% sodium azide and 50% glycerol pH 7.3.  
Aliquoting is unnecessary for -20°C storage

\*\*\* 20ul sizes contain 0.1% BSA

For technical support and original validation data for this product please contact:  
T: 1 (888) 4PTGLAB (1-888-478-4522) (toll free in USA), or 1(312) 455-8498 (outside USA) E: proteintech@ptglab.com W: ptglab.com

This product is exclusively available under Proteintech Group brand and is not available to purchase from any other manufacturer.

## Selected Validation Data



Various lysates were subjected to SDS PAGE followed by western blot with 13819-1-AP (TKL1 antibody) at dilution of 1:1000 incubated at room temperature for 1.5 hours.