

For Research Use Only

ARTS1 Polyclonal antibody

Catalog Number: 13821-1-AP

2 Publications



Basic Information

Catalog Number:

13821-1-AP

Size:

150ul, Concentration: 300 ug/ml by Nanodrop;

Source:

Rabbit

Isotype:

IgG

Immunogen Catalog Number:

AG4918

GenBank Accession Number:

BC030775

GeneID (NCBI):

51752

UNIPROT ID:

Q9NZ08

Full Name:

endoplasmic reticulum aminopeptidase 1

Calculated MW:

107 kDa

Observed MW:

106 kDa

Purification Method:

Antigen affinity purification

Recommended Dilutions:

WB 1:500-1:2000

IP 0.5-4.0 ug for 1.0-3.0 mg of total protein lysate

IHC 1:20-1:200

Applications

Tested Applications:

WB, IP, IHC, ELISA

Cited Applications:

WB

Species Specificity:

human, mouse, rat

Cited Species:

human

Positive Controls:

WB : K-562 cells, Jurkat cells

IP : Jurkat cells,

IHC : human ovary tumor tissue,

Note-IHC: suggested antigen retrieval with TE buffer pH 9.0; (*) Alternatively, antigen retrieval may be performed with citrate buffer pH 6.0

Background Information

ARTS1 is an endoplasmic reticulum-associated aminopeptidase (also known as ERAP1). ERAP1 is induced by interferon-gamma and can degrade peptides 9-15 residues long (PMID:18987748). ARTS1 is a 100 kDa, monomeric, soluble zinc aminopeptidase. It can be glycosylated to 120kDa and form homodimers and heterodimers (PMID:15908954).

Notable Publications

Author	Pubmed ID	Journal	Application
Seregin Sergey S SS	24028501	Autoimmunity	
Irini Evnouchidou	24928998	J Immunol	WB

Storage

Storage:

Store at -20°C. Stable for one year after shipment.

Storage Buffer:

PBS with 0.02% sodium azide and 50% glycerol pH 7.3.

Aliquoting is unnecessary for -20°C storage

*** 20ul sizes contain 0.1% BSA

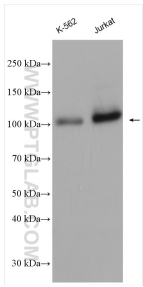
For technical support and original validation data for this product please contact:

T: 1 (888) 4PTGLAB (1-888-478-4522) (toll free in USA), or 1(312) 455-8498 (outside USA)

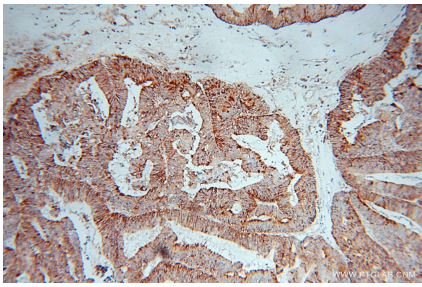
E: proteintech@ptglab.com
W: ptglab.com

This product is exclusively available under Proteintech Group brand and is not available to purchase from any other manufacturer.

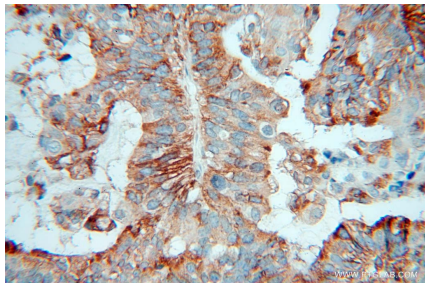
Selected Validation Data



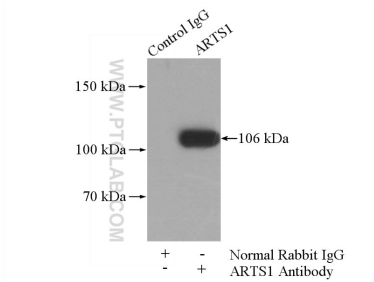
K-562 cells were subjected to SDS PAGE followed by western blot with 13821-1-AP (ARTS1 antibody) at dilution of 1:1000 incubated at room temperature for 1.5 hours.



Immunohistochemical analysis of paraffin-embedded human ovary tumor using 13821-1-AP (ARTS1 antibody) at dilution of 1:100 (under 10x lens).



Immunohistochemical analysis of paraffin-embedded human ovary tumor using 13821-1-AP (ARTS1 antibody) at dilution of 1:100 (under 40x lens).



IP result of anti-ARTS1 (IP:13821-1-AP, 4ug; Detection:13821-1-AP 1:600) with Jurkat cells lysate 3600ug.