

For Research Use Only

SETX Polyclonal antibody, PBS Only

Catalog Number: 13837-1-PBS



Basic Information

Catalog Number:

13837-1-PBS

Size:

100ug, Concentration: 1 mg/ml by
Nanodrop;

Source:

Rabbit

Isotype:

IgG

Immunogen Catalog Number:

AG4785

GenBank Accession Number:

BC032600

GeneID (NCBI):

23064

UNIPROT ID:

Q7Z333

Full Name:

senataxin

Calculated MW:

2677 aa, 303 kDa

Observed MW:

300 kDa

Purification Method:

Antigen affinity purification

Applications

Tested Applications:

WB, IHC, Indirect ELISA

Species Specificity:

human

Background Information

SETX is involved in DNA double-strand breaks damage response generated by oxidative stress (PMID:17562789). It might also plays a role in the development and maturation of germ cells.

Storage

Storage:

Store at -80°C.

Storage Buffer:

PBS only, pH7.3

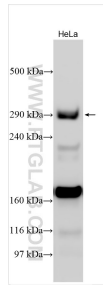
For technical support and original validation data for this product please contact:

T: 1 (888) 4PTGLAB (1-888-478-4522) (toll free
in USA), or 1(312) 455-8498 (outside USA)

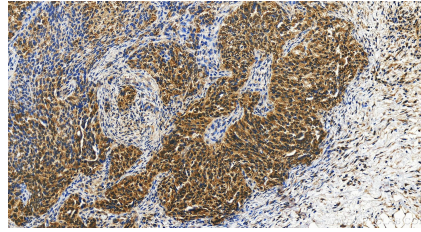
E: proteintech@ptglab.com
W: ptglab.com

This product is exclusively available under Proteintech Group brand and is not available to purchase from any other manufacturer.

Selected Validation Data



Various lysates were subjected to Tris-Acetate gel system followed by western blot with 13837-1-AP (SETX antibody) at dilution of 1:500 incubated at room temperature for 1.5 hours. This data was developed using the same antibody clone with 13837-1-PBS in a different storage buffer formulation.



Immunohistochemical analysis of paraffin-embedded human ovary cancer tissue slide using 13837-1-AP (SETX antibody) at dilution of 1:100 (under 20x lens). Heat mediated antigen retrieval with Tris-EDTA buffer (pH 9.0). This data was developed using the same antibody clone with 13837-1-PBS in a different storage buffer formulation.