

For Research Use Only

SAP18 Polyclonal antibody

Catalog Number: 13841-1-AP **1 Publications**



Basic Information

Catalog Number: 13841-1-AP	GenBank Accession Number: BC030836	Purification Method: Antigen affinity purification
Size: 150ul , Concentration: 350 µg/ml by Nanodrop and 233 µg/ml by Bradford method using BSA as the standard;	GeneID (NCBI): 10284	Recommended Dilutions: WB 1:500-1:1000 IP 0.5-4.0 ug for IP and 1:500-1:1000 for WB
Source: Rabbit	Full Name: Sin3A-associated protein, 18kDa	IHC 1:20-1:200 IF 1:20-1:200
Isotype: IgG	Calculated MW: 153 aa, 18 kDa	
Immunogen Catalog Number: AG4795	Observed MW: 18 kDa	

Applications

Tested Applications: IF, IHC, IP, WB, ELISA	Positive Controls:
Cited Applications: WB	WB : K-562 cells,
Species Specificity: human, mouse, rat	IP : K-562 cells,
Cited Species: human	IHC : human cervical cancer tissue, IF : HeLa cells,

Note-IHC: suggested antigen retrieval with TE buffer pH 9.0; (*) Alternatively, antigen retrieval may be performed with citrate buffer pH 6.0

Background Information

SAP18 is part of the SIN3-repressing complex, which enhances the ability of SIN3-HDAC1-mediated transcriptional repression. When tethered to the promoter, it can direct the formation of a repressive complex to core histone proteins. Component of a splicing-dependent multiprotein exon junction complex (EJC) deposited at splice junction on mRNAs. The EJC is a dynamic structure consisting of a few core proteins and several more peripheral nuclear and cytoplasmic associated factors that join the complex only transiently either during EJC assembly or during subsequent mRNA metabolism

Notable Publications

Author	Pubmed ID	Journal	Application
Mio Iwasaki	35573189	iScience	WB

Storage

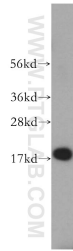
Storage:
Store at -20°C. Stable for one year after shipment.
Storage Buffer:
PBS with 0.02% sodium azide and 50% glycerol pH 7.3.
Aliquoting is unnecessary for -20°C storage

*** 20ul sizes contain 0.1% BSA

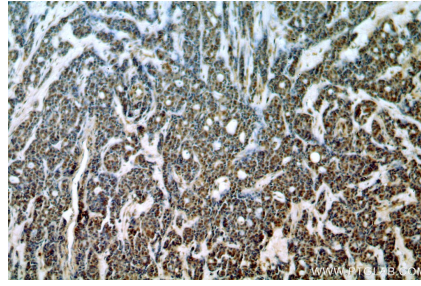
For technical support and original validation data for this product please contact:
T: 1 (888) 4PTGLAB (1-888-478-4522) (toll free in USA), or 1(312) 455-8498 (outside USA)
E: proteintech@ptglab.com
W: ptglab.com

This product is exclusively available under Proteintech Group brand and is not available to purchase from any other manufacturer.

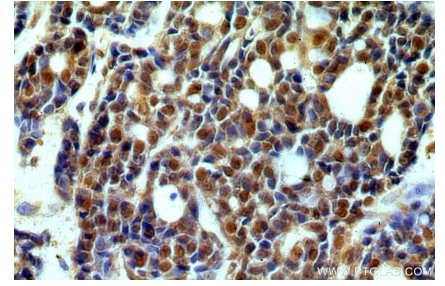
Selected Validation Data



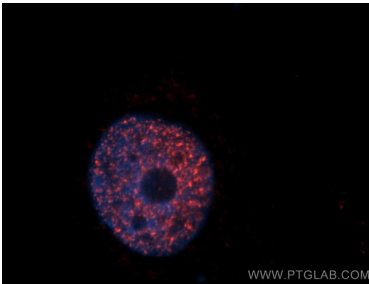
K-562 cells were subjected to SDS PAGE followed by western blot with 13841-1-AP (SAP18 antibody) at dilution of 1:500 incubated at room temperature for 1.5 hours.



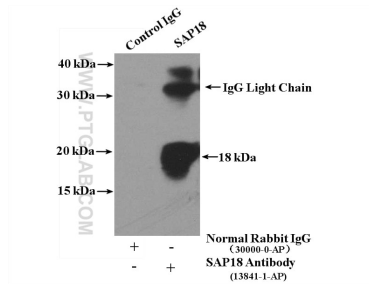
Immunohistochemical analysis of paraffin-embedded human cervical cancer using 13841-1-AP (SAP18 antibody) at dilution of 1:50 (under 10x lens).



Immunohistochemical analysis of paraffin-embedded human cervical cancer using 13841-1-AP (SAP18 antibody) at dilution of 1:50 (under 40x lens).



Immunofluorescent analysis of HeLa cells, using SAP18 antibody 13841-1-AP at 1:50 dilution and Rhodamine-labeled goat anti-rabbit IgG (red). Blue pseudocolor = DAPI (fluorescent DNA dye).



IP Result of anti-SAP18 (IP:13841-1-AP, 4ug; Detection:13841-1-AP 1:500) with K-562 cells lysate 3200ug.