

For Research Use Only

# LRRC4C Polyclonal antibody

Catalog Number: 13845-1-AP

2 Publications



## Basic Information

### Catalog Number:

13845-1-AP

### Size:

150ul, Concentration: 450 ug/ml by Nanodrop and 333 ug/ml by Bradford method using BSA as the standard;

### Source:

Rabbit

### Isotype:

IgG

### Immunogen Catalog Number:

AG4811

### GenBank Accession Number:

BC041374

### GeneID (NCBI):

57689

### UNIPROT ID:

Q9HCJ2

### Full Name:

leucine rich repeat containing 4C

### Calculated MW:

640 aa, 72 kDa

### Observed MW:

72 kDa

### Purification Method:

Antigen affinity purification

### Recommended Dilutions:

WB 1:500-1:1000

IHC 1:20-1:200

## Applications

### Tested Applications:

WB, IHC, ELISA

### Cited Applications:

IF

### Species Specificity:

human, mouse, rat

### Cited Species:

human

### Positive Controls:

WB : Y79 cells,

IHC : human gliomas tissue,

**Note-IHC: suggested antigen retrieval with TE buffer pH 9.0; (\*) Alternatively, antigen retrieval may be performed with citrate buffer pH 6.0**

## Notable Publications

Author	Pubmed ID	Journal	Application
Yan Zhang	33932995	Mol Med	IF
Qilin Zhang	36754052	Cell Rep Med	IF

## Storage

### Storage:

Store at -20°C. Stable for one year after shipment.

### Storage Buffer:

PBS with 0.02% sodium azide and 50% glycerol pH 7.3.

Aliquoting is unnecessary for -20°C storage

\*\*\* 20ul sizes contain 0.1% BSA

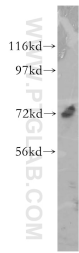
For technical support and original validation data for this product please contact:

T: 1 (888) 4PTGLAB (1-888-478-4522) (toll free in USA), or 1(312) 455-8498 (outside USA)

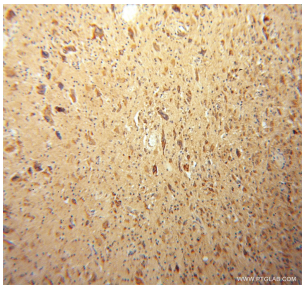
E: [proteintech@ptglab.com](mailto:proteintech@ptglab.com)  
W: [ptglab.com](http://ptglab.com)

This product is exclusively available under Proteintech Group brand and is not available to purchase from any other manufacturer.

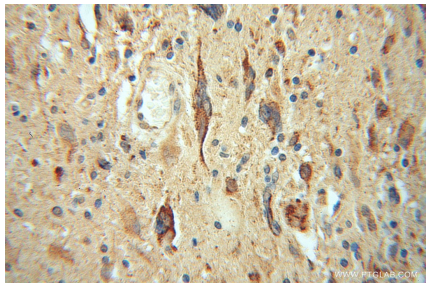
Selected Validation Data



Y79 cells were subjected to SDS PAGE followed by western blot with 13845-1-AP (LRRC4C antibody) at dilution of 1:500 incubated at room temperature for 1.5 hours.



Immunohistochemical analysis of paraffin-embedded human gliomas using 13845-1-AP (LRRC4C antibody) at dilution of 1:50 (under 10x lens).



Immunohistochemical analysis of paraffin-embedded human gliomas using 13845-1-AP (LRRC4C antibody) at dilution of 1:50 (under 40x lens).