

For Research Use Only

SORBS1 Polyclonal antibody, PBS Only

Catalog Number: 13854-1-PBS

Featured Product



Basic Information

Catalog Number:

13854-1-PBS

Size:

100ug, Concentration: 1 mg/ml by Nanodrop;

Source:

Rabbit

Isotype:

IgG

Immunogen Catalog Number:

AG4828

GenBank Accession Number:

BC042612

GeneID (NCBI):

10580

UNIPROT ID:

Q9BX66

Full Name:

sorbin and SH3 domain containing 1

Calculated MW:

1292 aa, 142 kDa

Observed MW:

70-75 kDa

Purification Method:

Antigen affinity purification

Applications

Tested Applications:

WB, IHC, IP, Indirect ELISA

Species Specificity:

human, mouse

Background Information

The sorbin homology (SoHo) family of adapter and scaffold proteins consists of three proteins: CAP, also known as Sorbin and SH3 domain containing 1 (Sorbs1), ArgBP2, also known as Sorbs2, and Vinexin, also known as Sorbs3. All Sorbs proteins are highly expressed in heart tissue, skeletal muscle, adipose tissue, and cells of the immune system, functioning as SH3-domain-mediated adaptors of scaffolding molecules (PMID: 32738595). SORBS1 can bind to signaling molecules (e.g., c-Cbl, c-Abl, and insulin receptor) to regulate glucose transport, transcription activity, and insulin signaling (PMID: 27791200).

Storage

Storage:

Store at -80°C.

Storage Buffer:

PBS only, pH7.3

For technical support and original validation data for this product please contact:

T: 1 (888) 4PTGLAB (1-888-478-4522) (toll free in USA), or 1(312) 455-8498 (outside USA)

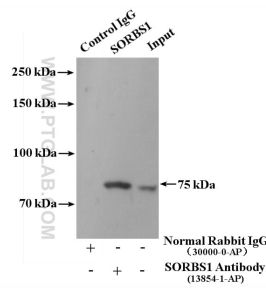
E: proteintech@ptglab.com
W: ptglab.com

This product is exclusively available under Proteintech Group brand and is not available to purchase from any other manufacturer.

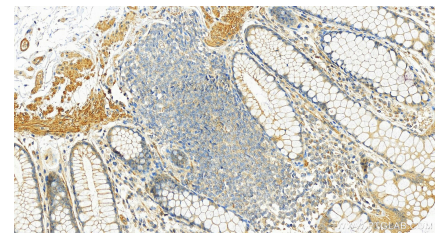
Selected Validation Data



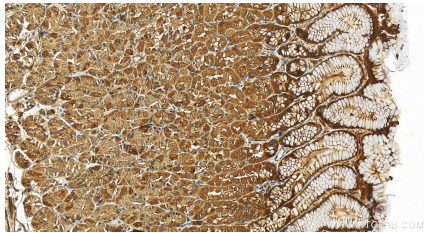
3T3-L1 cells were subjected to SDS PAGE followed by western blot with 13854-1-AP (SORBS1 antibody) at dilution of 1:800 incubated at room temperature for 1.5 hours. This data was developed using the same antibody clone with 13854-1-PBS in a different storage buffer formulation.



IP result of anti-SORBS1 (IP:13854-1-AP, 4ug; Detection:13854-1-AP 1:800) with mouse liver tissue lysate 4800ug. This data was developed using the same antibody clone with 13854-1-PBS in a different storage buffer formulation.



Immunohistochemical analysis of paraffin-embedded human normal colon slide using 13854-1-AP (SORBS1 antibody) at dilution of 1:200 (under 20x lens). Heat mediated antigen retrieval with Tris-EDTA buffer (pH 9.0). This data was developed using the same antibody clone with 13854-1-PBS in a different storage buffer formulation.



Immunohistochemical analysis of paraffin-embedded human stomach tissue slide using 13854-1-AP (SORBS1 antibody) at dilution of 1:200 (under 20x lens). Heat mediated antigen retrieval with Tris-EDTA buffer (pH 9.0). This data was developed using the same antibody clone with 13854-1-PBS in a different storage buffer formulation.