

For Research Use Only

DCP1B Polyclonal antibody

Catalog Number: 13863-1-AP

1 Publications



Basic Information

Catalog Number:

13863-1-AP

Size:

150ul, Concentration: 700 ug/ml by Nanodrop and 347 ug/ml by Bradford method using BSA as the standard;

Source:

Rabbit

Isotype:

IgG

Immunogen Catalog Number:

AG4845

GenBank Accession Number:

BC043437

GeneID (NCBI):

196513

UNIPROT ID:

Q8IZD4

Full Name:

DCP1 decapping enzyme homolog B (S. cerevisiae)

Calculated MW:

618 aa, 68 kDa

Observed MW:

68 kDa

Purification Method:

Antigen affinity purification

Recommended Dilutions:

WB 1:1000-1:6000

IP 0.5-4.0 ug for 1.0-3.0 mg of total protein lysate

IHC 1:20-1:200

IF/ICC 1:200-1:800

Applications

Tested Applications:

WB, IHC, IF/ICC, IP, ELISA

Cited Applications:

IF

Species Specificity:

human, mouse, rat

Note-IHC: suggested antigen retrieval with TE buffer pH 9.0; (*) Alternatively, antigen retrieval may be performed with citrate buffer pH 6.0

Positive Controls:

WB: mouse liver tissue, HeLa cells, human liver tissue, Jurkat cells, rat liver tissue, rat spleen tissue

IP: HeLa cells,

IHC: human liver cancer tissue,

IF/ICC: HeLa cells, A549 cells

Background Information

DCP1B belongs to DCP1 family. DCP1B may play a role in the degradation of mRNAs, both in normal mRNA turnover and in nonsense-mediated mRNA decay. It may remove the 7-methyl guanine cap structure mRNA molecules, yielding a 5'-phosphorylated mRNA fragment and 7m-GDP. DCP1B has 2 isoforms with the molecular mass of 56 and 68 kDa. DCP1B is associated with DM-related atherogenesis (PMID:33195466).

Notable Publications

Author	Pubmed ID	Journal	Application
Yangchao Dong	25872476	Int J Mol Med	IF

Storage

Storage:

Store at -20°C. Stable for one year after shipment.

Storage Buffer:

PBS with 0.02% sodium azide and 50% glycerol pH 7.3.

Aliquoting is unnecessary for -20°C storage

*** 20ul sizes contain 0.1% BSA

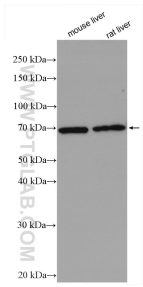
For technical support and original validation data for this product please contact:

T: 1 (888) 4PTGLAB (1-888-478-4522) (toll free in USA), or 1(312) 455-8498 (outside USA)

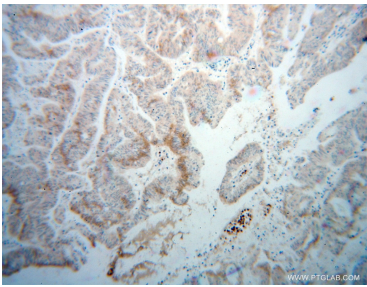
E: proteintech@ptglab.com
W: ptglab.com

This product is exclusively available under Proteintech Group brand and is not available to purchase from any other manufacturer.

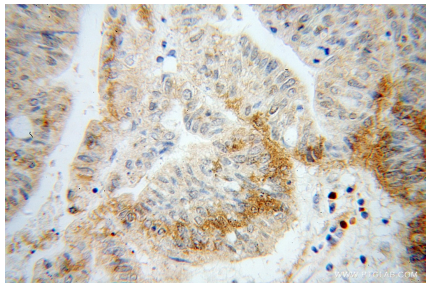
Selected Validation Data



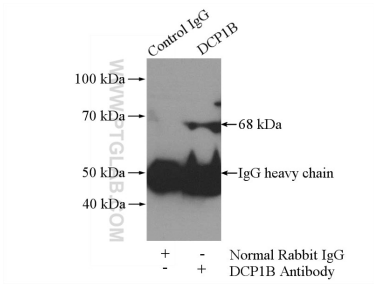
Various lysates were subjected to SDS PAGE followed by western blot with 13863-1-AP (DCP1B antibody) at dilution of 1:3000 incubated at room temperature for 1.5 hours.



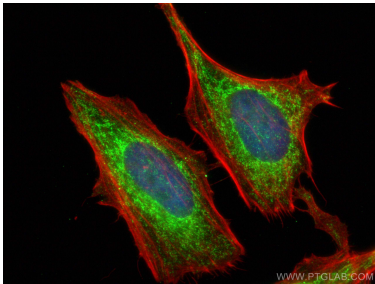
Immunohistochemical analysis of paraffin-embedded human liver cancer using 13863-1-AP (DCP1B antibody) at dilution of 1:100 (under 10x lens).



Immunohistochemical analysis of paraffin-embedded human liver cancer using 13863-1-AP (DCP1B antibody) at dilution of 1:100 (under 40x lens).



IP result of anti-DCP1B (IP:13863-1-AP, 4ug; Detection:13863-1-AP 1:500) with HeLa cells lysate 1520ug.



Immunofluorescent analysis of (4% PFA) fixed HeLa cells using DCP1B antibody (13863-1-AP) at dilution of 1:400 and CoraLite@488-Conjugated AffiniPure Goat Anti-Rabbit IgG(H+L), CL594-phalloidin (red).