

For Research Use Only

TRAPPC1 Polyclonal antibody

Catalog Number: 13868-1-AP



Basic Information

Catalog Number: 13868-1-AP	GenBank Accession Number: BC032717	Purification Method: Antigen affinity purification
Size: 150ul, Concentration: 400 µg/ml by Nanodrop and 280 µg/ml by Bradford method using BSA as the standard;	GeneID (NCBI): 58485	Recommended Dilutions: WB 1:500-1:3000
Source: Rabbit	UNIPROT ID: Q9Y5R8	IHC 1:50-1:500
Isotype: IgG	Full Name: trafficking protein particle complex 1	IF/ICC 1:200-1:800
Immunogen Catalog Number: AG4616	Calculated MW: 145 aa, 17 kDa	
	Observed MW: 15-17 kDa	

Applications

Tested Applications: WB, IHC, IF/ICC, ELISA	Positive Controls:
Species Specificity: human, mouse, rat	WB : Jurkat cells, mouse brain tissue, rat brain tissue
Note-IHC: suggested antigen retrieval with TE buffer pH 9.0; (*) Alternatively, antigen retrieval may be performed with citrate buffer pH 6.0	IHC : mouse brain tissue,
	IF/ICC : HeLa cells,

Background Information

TRAPPC1, also known as BET5 or MUM2, is a part of the multisubunit TRAPP (transport protein particle) complexes which are involved in the tethering process at different trafficking steps of vesicle transport (PMID: 16828797). TRAPPC1 may play a role in vesicular transport from the endoplasmic reticulum to the Golgi (PMID: 10582700).

Storage

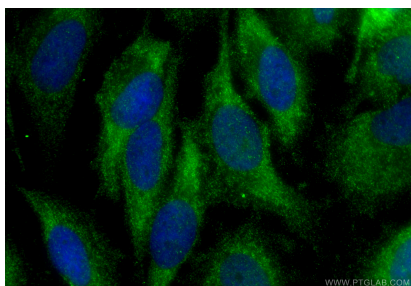
Storage:
Store at -20°C. Stable for one year after shipment.
Storage Buffer:
PBS with 0.02% sodium azide and 50% glycerol pH 7.3.
Aliquoting is unnecessary for -20°C storage

*** 20ul sizes contain 0.1% BSA

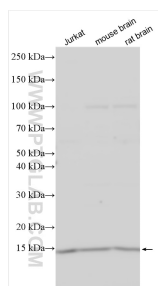
For technical support and original validation data for this product please contact:
T: 1 (888) 4PTGLAB (1-888-478-4522) (toll free in USA), or 1(312) 455-8498 (outside USA)
E: proteintech@ptglab.com
W: ptglab.com

This product is exclusively available under Proteintech Group brand and is not available to purchase from any other manufacturer.

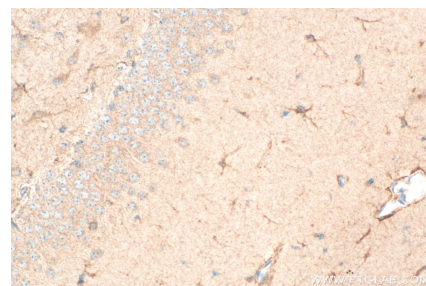
Selected Validation Data



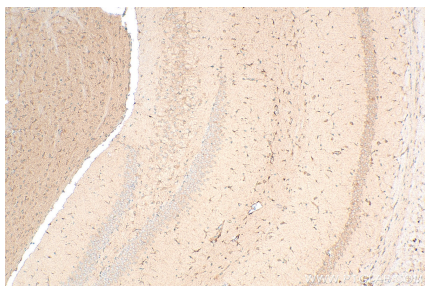
Immunofluorescent analysis of (-20°C Ethanol) fixed HeLa cells using TRAPPC1 antibody (13868-1-AP) at dilution of 1:400 and CoraLite®488-Conjugated Goat Anti-Rabbit IgG(H+L) (SA00013-2).



Various lysates were subjected to SDS PAGE followed by western blot with 13868-1-AP (TRAPPC1 antibody) at dilution of 1:1500 incubated at room temperature for 1.5 hours.



Immunohistochemical analysis of paraffin-embedded mouse brain tissue slide using 13868-1-AP (TRAPPC1 antibody) at dilution of 1:200 (under 40x lens). Heat mediated antigen retrieval with Tris-EDTA buffer (pH 9.0).



Immunohistochemical analysis of paraffin-embedded mouse brain tissue slide using 13868-1-AP (TRAPPC1 antibody) at dilution of 1:200 (under 10x lens). Heat mediated antigen retrieval with Tris-EDTA buffer (pH 9.0).