

For Research Use Only

# KBTBD2 Polyclonal antibody

Catalog Number: 13871-1-AP



## Basic Information

### Catalog Number:

13871-1-AP

### Size:

150ul , Concentration: 240 ug/ml by Nanodrop;

### Source:

Rabbit

### Isotype:

IgG

### Immunogen Catalog Number:

AG4823

### GenBank Accession Number:

BC047107

### GeneID (NCBI):

25948

### UNIPROT ID:

Q8IY47

### Full Name:

kelch repeat and BTB (POZ) domain containing 2

### Calculated MW:

622 aa, 71 kDa

### Observed MW:

60-70 kDa

### Purification Method:

Antigen affinity purification

### Recommended Dilutions:

WB 1:500-1:1000

## Applications

### Tested Applications:

WB, ELISA

### Species Specificity:

human, mouse, rat

### Positive Controls:

WB : COLO 320 cells, A549 cells

## Background Information

Kelch repeat and BTB domain containing 2(KBTBD2), also known as BTB and kelch domain-containing protein 1, encodes a BTB-Kelch family subunit that p85 $\alpha$ -specific recognition for the Cullin3-based E3 ubiquitin ligase complex, which regulates p85 $\alpha$  protein ubiquitination and subsequently regulates phosphoinositide-3 kinases (PI3K) signaling (PMID:27708159). However, the expression profile and functional significance of Kbtbd2 is still largely unknown. The Human Protein Atlas which is an online source shows high Kbtbd2 expression in the spleen and thymus, suggesting that Kbtbd2 might involved in immunization (PMID:29331106). In addition, Kbtbd2 is related to Src-induced phosphorylation of protein, spermatogonial stem cell activity(PMID:15623525, 29331106). A 60-70 kDa band has also been reported(PMID:27708159).

## Storage

### Storage:

Store at -20°C. Stable for one year after shipment.

### Storage Buffer:

PBS with 0.02% sodium azide and 50% glycerol pH 7.3.

Aliquoting is unnecessary for -20°C storage

\*\*\* 20ul sizes contain 0.1% BSA

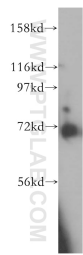
For technical support and original validation data for this product please contact:

T: 1 (888) 4PTGLAB (1-888-478-4522) (toll free in USA), or 1(312) 455-8498 (outside USA)

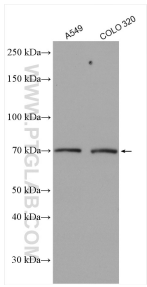
E: [proteintech@ptglab.com](mailto:proteintech@ptglab.com)  
W: [ptglab.com](http://ptglab.com)

This product is exclusively available under Proteintech Group brand and is not available to purchase from any other manufacturer.

## Selected Validation Data



COLO 320 cells were subjected to SDS PAGE followed by western blot with 13871-1-AP (KBTBD2 antibody) at dilution of 1:500 incubated at room temperature for 1.5 hours.



Various lysates were subjected to SDS PAGE followed by western blot with 13871-1-AP (KBTBD2 antibody) at dilution of 1:1000 incubated at room temperature for 1.5 hours.