

For Research Use Only

# FIG4 Polyclonal antibody

Catalog Number: 13875-1-AP



## Basic Information

**Catalog Number:**  
13875-1-AP

**Size:**  
150ul, Concentration: 187 µg/ml by Bradford method using BSA as the standard;

**Source:**  
Rabbit

**Isotype:**  
IgG

**Immunogen Catalog Number:**  
AG4929

**GenBank Accession Number:**  
BC041338

**GeneID (NCBI):**  
9896

**Full Name:**  
FIG4 homolog (*S. cerevisiae*)

**Calculated MW:**  
907 aa, 104 kDa

**Purification Method:**  
Antigen affinity purification

**Recommended Dilutions:**  
IP 0.5-4.0 ug for IP and 1:200-1:1000 for WB  
IHC 1:100-1:400

## Applications

**Tested Applications:**  
IHC, IP, ELISA

**Species Specificity:**  
human, mouse, rat

**Note-IHC: suggested antigen retrieval with TE buffer pH 9.0; (\*) Alternatively, antigen retrieval may be performed with citrate buffer pH 6.0**

**Positive Controls:**

IP: COS-7 cells,

IHC: human renal cell carcinoma tissue,

## Background Information

### Storage

**Storage:**

Store at -20°C. Stable for one year after shipment.

**Storage Buffer:**

PBS with 0.02% sodium azide and 50% glycerol pH 7.3.

Aliquoting is unnecessary for -20°C storage

**\*\*\* 20ul sizes contain 0.1% BSA**

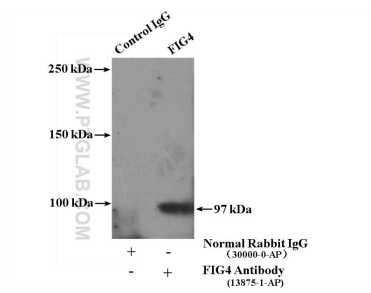
For technical support and original validation data for this product please contact:

T: 1 (888) 4PTGLAB (1-888-478-4522) (toll free in USA), or 1(312) 455-8498 (outside USA)

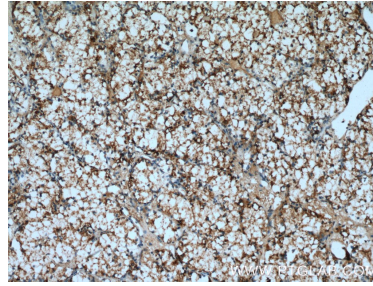
E: proteintech@ptglab.com  
W: ptglab.com

**This product is exclusively available under Proteintech Group brand and is not available to purchase from any other manufacturer.**

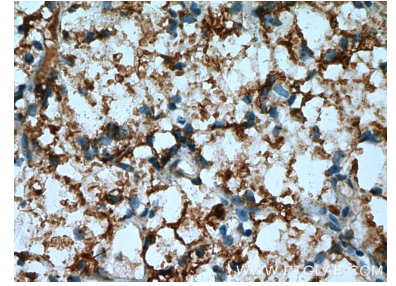
## Selected Validation Data



IP Result of anti-FIG4 (IP:13875-1-AP, 4ug; Detection:13875-1-AP 1:300) with COS-7 cells lysate 2400ug.



Immunohistochemical analysis of paraffin-embedded human renal cell carcinoma tissue slide using 13875-1-AP (FIG4 Antibody) at dilution of 1:200 (under 10x lens). Heat mediated antigen retrieval with Tris-EDTA buffer (pH 9.0).



Immunohistochemical analysis of paraffin-embedded human renal cell carcinoma tissue slide using 13875-1-AP (FIG4 Antibody) at dilution of 1:200 (under 40x lens). Heat mediated antigen retrieval with Tris-EDTA buffer (pH 9.0).