

For Research Use Only

# NKCC1,SLC12A2 Polyclonal antibody

Catalog Number:13884-1-AP

Featured Product

28 Publications



## Basic Information

### Catalog Number:

13884-1-AP

### Size:

150ul , Concentration: 700 ug/ml by Nanodrop;

### Source:

Rabbit

### Isotype:

IgG

### Immunogen Catalog Number:

AG4991

### GenBank Accession Number:

BC033003

### GeneID (NCBI):

6558

### UNIPROT ID:

P55011

### Full Name:

solute carrier family 12 (sodium/potassium/chloride transporters), member 2

### Calculated MW:

131 kDa

### Observed MW:

150-160 kDa

### Purification Method:

Antigen affinity purification

### Recommended Dilutions:

WB 1:1000-1:4000

IHC 1:50-1:500

## Applications

### Tested Applications:

WB, IHC, ELISA

### Cited Applications:

WB, IHC, IF, IP

### Species Specificity:

human, mouse, rat

### Cited Species:

human, mouse, rat, pig

### Positive Controls:

WB : mouse brain tissue, 37°C incubated mouse brain tissue

IHC : human colon cancer tissue,

**Note-IHC: suggested antigen retrieval with TE buffer pH 9.0; (\*) Alternatively, antigen retrieval may be performed with citrate buffer pH 6.0**

## Background Information

The Na-K-Cl cotransporter sodium-potassium-chloride cotransporter 1 (NKCC1), encoded by the SLC12A2 gene, is an intensively studied member of the CCC family. NKCC1 is a membrane protein and plays fundamental roles in regulating trans-epithelial ion movement, cell volume, chloride homeostasis and neuronal excitability. NKCC1 assembles into a dimer, with the first ten transmembrane (TM) helices harboring the transport core and TM11-TM12 helices lining the dimer interface(PMID: 32081947). The observed molecular weight of NKCC1 is about 140 kDa, glycosylated NKCC1 is detected a band at 170 kDa (PMID: 22723696).

## Notable Publications

Author	Pubmed ID	Journal	Application
Bo Yang	26389591	PLoS One	WB
Michelle W Antoine	24009395	Science	WB,IHC
Jie Zhu	34626749	Neuroscience	WB

## Storage

### Storage:

Store at -20°C. Stable for one year after shipment.

### Storage Buffer:

PBS with 0.02% sodium azide and 50% glycerol, pH7.3

Aliquoting is unnecessary for -20°C storage

\*\*\* 20ul sizes contain 0.1% BSA

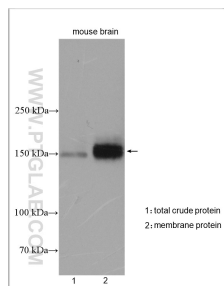
For technical support and original validation data for this product please contact:

T: 1 (888) 4PTGLAB (1-888-478-4522) (toll free in USA), or 1(312) 455-8498 (outside USA)

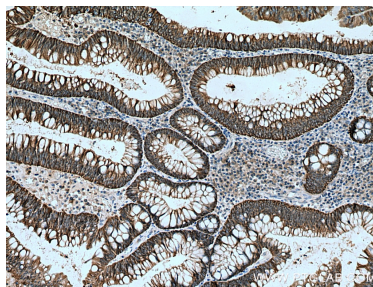
E: [proteintech@ptglab.com](mailto:proteintech@ptglab.com)  
W: [ptglab.com](http://ptglab.com)

This product is exclusively available under Proteintech Group brand and is not available to purchase from any other manufacturer.

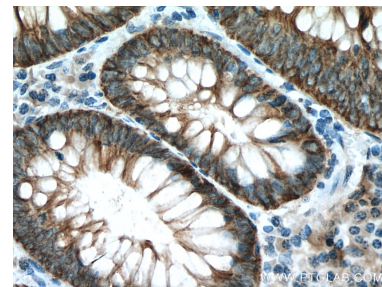
## Selected Validation Data



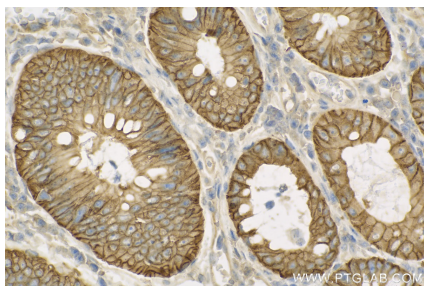
Mouse brain total extract lysate and 37°C incubated mouse brain membrane extract lysate were subjected to SDS PAGE followed by western blot with 13884-1-AP (NKCC1,SLC12A2 antibody) at dilution of 1:2000 incubated at room temperature for 1.5 hours.



Immunohistochemical analysis of paraffin-embedded human colon cancer tissue slide using 13884-1-AP (NKCC1 antibody) at dilution of 1:200 (under 10x lens). Heat mediated antigen retrieval with Tris-EDTA buffer (pH 9.0).



Immunohistochemical analysis of paraffin-embedded human colon cancer tissue slide using 13884-1-AP (NKCC1 antibody) at dilution of 1:200 (under 40x lens). Heat mediated antigen retrieval with Tris-EDTA buffer (pH 9.0).



Immunohistochemical analysis of paraffin-embedded Colorectal cancer slide using 13884-1-AP (NKCC1,SLC12A2 antibody) at dilution of 1:400 (under 40x lens). Heat mediated antigen retrieval with Tris-EDTA buffer (pH 9.0).