

For Research Use Only

RABGAP1L Polyclonal antibody

Catalog Number: 13894-1-AP

Featured Product

4 Publications



Basic Information

Catalog Number:

13894-1-AP

Size:

150ul, Concentration: 350 ug/ml by Nanodrop and 160 ug/ml by Bradford method using BSA as the standard;

Source:

Rabbit

Isotype:

IgG

Immunogen Catalog Number:

AG4856

GenBank Accession Number:

BC041888

GeneID (NCBI):

9910

UNIPROT ID:

Q5R372

Full Name:

RAB GTPase activating protein 1-like

Calculated MW:

815 aa, 93 kDa

Observed MW:

93-105 kDa

Purification Method:

Antigen affinity purification

Recommended Dilutions:

WB 1:500-1:2000

IP 0.5-4.0 ug for 1.0-3.0 mg of total protein lysate

IHC 1:20-1:200

IF/ICC 1:10-1:100

Applications

Tested Applications:

WB, IHC, IF/ICC, IP, ELISA

Cited Applications:

WB, IHC, IF

Species Specificity:

human, mouse, rat

Cited Species:

human, mouse, rat

Note-IHC: suggested antigen retrieval with TE buffer pH 9.0; (*) Alternatively, antigen retrieval may be performed with citrate buffer pH 6.0

Positive Controls:

WB : HeLa cells, MCF-7 cells

IP : HeLa cells,

IHC : human hepatocirrhosis tissue, human placenta tissue

IF/ICC : HeLa cells,

Background Information

RABGAP1L, also known as TBC1D18, is a member of the Tre2/Bub2/Cdc16 (TBC)-domain-containing protein family. Overexpression of RABGAP1L potentiated the antiviral action of IFN against a panel of viruses, including IAV, and its function required a catalytically active TBC domain.

Notable Publications

Author	Pubmed ID	Journal	Application
Shu Hiragi	36197338	J Cell Biol	WB
Emily Golden	33772001	Nat Commun	IHC
Sonja Fembach	35320721	Cell Rep	WB,IF

Storage

Storage:

Store at -20°C. Stable for one year after shipment.

Storage Buffer:

PBS with 0.02% sodium azide and 50% glycerol pH 7.3.

Aliquoting is unnecessary for -20°C storage

*** 20ul sizes contain 0.1% BSA

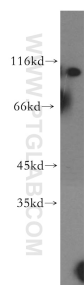
For technical support and original validation data for this product please contact:

T: 1 (888) 4PTGLAB (1-888-478-4522) (toll free in USA), or 1(312) 455-8498 (outside USA)

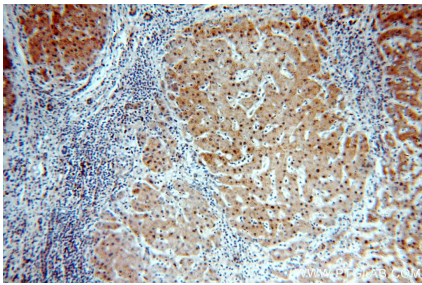
E: proteintech@ptglab.com
W: ptglab.com

This product is exclusively available under Proteintech Group brand and is not available to purchase from any other manufacturer.

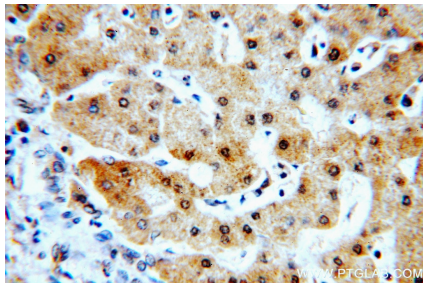
Selected Validation Data



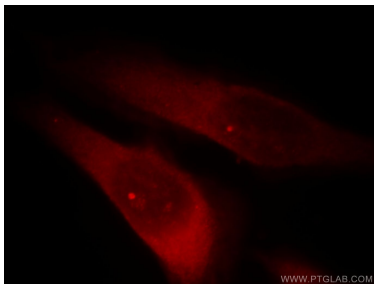
HeLa cells were subjected to SDS PAGE followed by western blot with 13894-1-AP (RABGAP1L antibody) at dilution of 1:1000 incubated at room temperature for 1.5 hours.



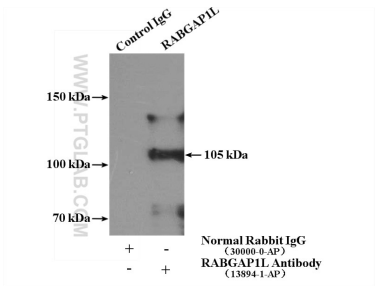
Immunohistochemical analysis of paraffin-embedded human hepatocirrhosis using 13894-1-AP (RABGAP1L antibody) at dilution of 1:100 (under 10x lens).



Immunohistochemical analysis of paraffin-embedded human hepatocirrhosis using 13894-1-AP (RABGAP1L antibody) at dilution of 1:100 (under 40x lens).



Immunofluorescent analysis of HeLa cells, using RABGAP1L antibody 13894-1-AP at 1:25 dilution and Rhodamine-labeled goat anti-rabbit IgG (red).



IP result of anti-RABGAP1L (IP:13894-1-AP, 4ug; Detection:13894-1-AP 1:1000) with HeLa cells lysate 3200ug.