

For Research Use Only

# HPS5 Polyclonal antibody

Catalog Number: 13901-1-AP

6 Publications



## Basic Information

### Catalog Number:

13901-1-AP

### Size:

150ul, Concentration: 800 ug/ml by Nanodrop and 427 ug/ml by Bradford method using BSA as the standard;

### Source:

Rabbit

### Isotype:

IgG

### Immunogen Catalog Number:

AG4867

### GenBank Accession Number:

BC033640

### GeneID (NCBI):

11234

### UNIPROT ID:

Q9UPZ3

### Full Name:

Hermansky-Pudlak syndrome 5

### Calculated MW:

1129 aa, 127 kDa

### Observed MW:

135-141 kDa

### Purification Method:

Antigen affinity purification

### Recommended Dilutions:

WB 1:500-1:2400

IHC 1:20-1:200

IF/ICC 1:20-1:200

## Applications

### Tested Applications:

WB, IHC, IF/ICC, ELISA

### Cited Applications:

WB

### Species Specificity:

human, mouse, rat

### Cited Species:

human

**Note-IHC: suggested antigen retrieval with TE buffer pH 9.0; (\*) Alternatively, antigen retrieval may be performed with citrate buffer pH 6.0**

### Positive Controls:

WB : mouse liver tissue, mouse spleen tissue

IHC : human placenta tissue, human heart tissue, human lung tissue, human skin tissue

IF/ICC : MCF-7 cells,

## Background Information

Hermansky-Pudlak syndrome 5 protein (HPS-5), also named Ruby-eye protein 2 homolog (Ru2), plays a role in organelle biogenesis associated with melanosomes, platelet dense granules, and lysosomes. This protein interacts with Hermansky-Pudlak syndrome 6 protein and may interact with the cytoplasmic domain of integrin, alpha-3. Mutations in this gene are associated with Hermansky-Pudlak syndrome type 5.

## Notable Publications

Author	Pubmed ID	Journal	Application
Joshi Stephen	28296950	PLoS One	WB
Anish Vaibhav Sharda	32614949	Blood	WB
Dina Marek-Yagel	36046236	Front Genet	WB

## Storage

### Storage:

Store at -20°C. Stable for one year after shipment.

### Storage Buffer:

PBS with 0.02% sodium azide and 50% glycerol pH 7.3.

Aliquoting is unnecessary for -20°C storage

\*\*\* 20ul sizes contain 0.1% BSA

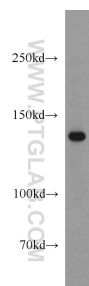
For technical support and original validation data for this product please contact:

T: 1 (888) 4PTGLAB (1-888-478-4522) (toll free in USA), or 1(312) 455-8498 (outside USA)

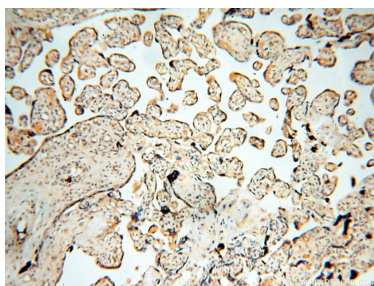
E: [proteintech@ptglab.com](mailto:proteintech@ptglab.com)  
W: [ptglab.com](http://ptglab.com)

This product is exclusively available under Proteintech Group brand and is not available to purchase from any other manufacturer.

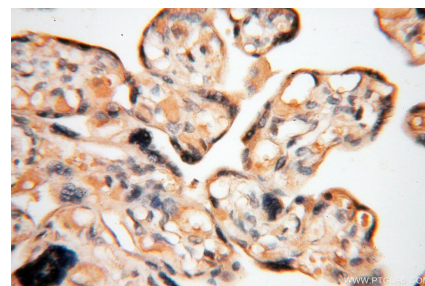
## Selected Validation Data



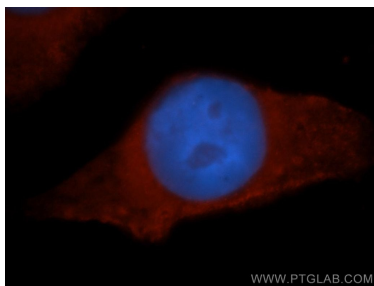
mouse liver tissue were subjected to SDS PAGE followed by western blot with 13901-1-AP (HP55 antibody) at dilution of 1:1000 incubated at room temperature for 1.5 hours.



Immunohistochemical analysis of paraffin-embedded human placenta using 13901-1-AP (HP55 antibody) at dilution of 1:100 (under 10x lens).



Immunohistochemical analysis of paraffin-embedded human placenta using 13901-1-AP (HP55 antibody) at dilution of 1:100 (under 40x lens).



Immunofluorescent analysis of MCF-7 cells, using HP55 antibody 13901-1-AP at 1:50 dilution and Rhodamine-labeled goat anti-rabbit IgG (red). Blue pseudocolor = DAPI (fluorescent DNA dye).