

For Research Use Only

# SPAG8 Polyclonal antibody, PBS Only

Catalog Number: 13915-1-PBS



## Basic Information

**Catalog Number:**

13915-1-PBS

**Size:**

100ug , Concentration: 1 mg/ml by Nanodrop;

**Source:**

Rabbit

**Isotype:**

IgG

**Immunogen Catalog Number:**

AG4910

**GenBank Accession Number:**

BC019247

**GeneID (NCBI):**

26206

**UNIPROT ID:**

Q99932

**Full Name:**

sperm associated antigen 8

**Calculated MW:**

45 kDa, 54 kDa

**Observed MW:**

56-70 kDa

**Purification Method:**

Antigen affinity purification

## Applications

**Tested Applications:**

WB, IHC, IF/ICC, IP, Indirect ELISA

**Species Specificity:**

human, mouse, rat

## Background Information

SPAG8, also named as Sperm-associated antigen 8 or HSD-1, is a 426 amino acid protein, which is expressed in testis (germ cells), but not in liver, kidney, prostate and small intestine. SPAG8 may play a role in fertility and microtubule formation through interaction with RANBP9. SPAG8 as testis-specific protein is produced during male germ cell differentiation and functions in a germ cell type- and stage-specific manner during spermatogenesis.

## Storage

**Storage:**

Store at -80°C.

**Storage Buffer:**

PBS Only

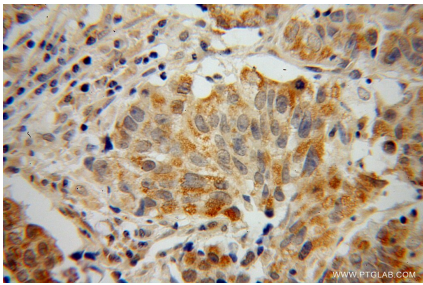
For technical support and original validation data for this product please contact:

T: 1 (888) 4PTGLAB (1-888-478-4522) (toll free in USA), or 1(312) 455-8498 (outside USA)

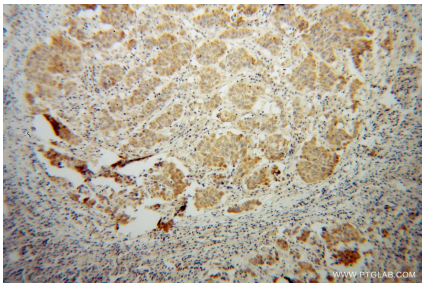
E: [proteintech@ptglab.com](mailto:proteintech@ptglab.com)  
W: [ptglab.com](http://ptglab.com)

This product is exclusively available under Proteintech Group brand and is not available to purchase from any other manufacturer.

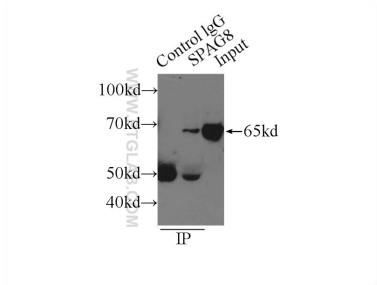
Selected Validation Data



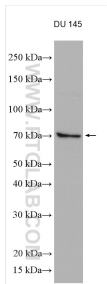
Immunohistochemical analysis of paraffin-embedded human prostate cancer using 13915-1-AP (SPAG8 antibody) at dilution of 1:100 (under 40x lens). This data was developed using the same antibody clone with 13915-1-PBS in a different storage buffer formulation.



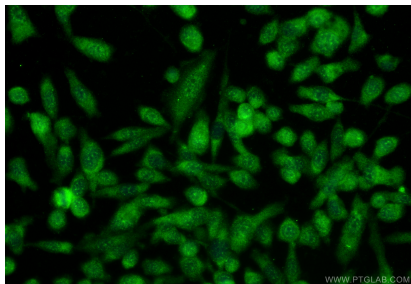
Immunohistochemical analysis of paraffin-embedded human prostate cancer using 13915-1-AP (SPAG8 antibody) at dilution of 1:100 (under 10x lens). This data was developed using the same antibody clone with 13915-1-PBS in a different storage buffer formulation.



IP result of anti-SPAG8 (IP:13915-1-AP, 3ug; Detection:13915-1-AP 1:500) with mouse testis tissue lysate 6000ug. This data was developed using the same antibody clone with 13915-1-PBS in a different storage buffer formulation.



DU 145 cells lysates were subjected to SDS PAGE followed by western blot with 13915-1-AP (SPAG8 antibody) at dilution of 1:600 incubated at room temperature for 1.5 hours. This data was developed using the same antibody clone with 13915-1-PBS in a different storage buffer formulation.



Immunofluorescent analysis of (-20°C Ethanol) fixed PC-3 cells using SPAG8 antibody (13915-1-AP) at dilution of 1:400 and CoraLite@488-Conjugated Goat Anti-Rabbit IgG(H+L) (SA00013-2). This data was developed using the same antibody clone with 13915-1-PBS in a different storage buffer formulation.