

For Research Use Only

RBM17 Polyclonal antibody

Catalog Number: 13918-1-AP

Featured Product

2 Publications



Basic Information

Catalog Number:

13918-1-AP

Size:

150ul, Concentration: 850 ug/ml by Nanodrop and 400 ug/ml by Bradford method using BSA as the standard;

Source:

Rabbit

Isotype:

IgG

Immunogen Catalog Number:

AG4921

GenBank Accession Number:

BC039322

GeneID (NCBI):

84991

UNIPROT ID:

Q96I25

Full Name:

RNA binding motif protein 17

Calculated MW:

401 aa, 45 kDa

Observed MW:

45 kDa

Purification Method:

Antigen affinity purification

Recommended Dilutions:

WB 1:1000-1:6000

IP 0.5-4.0 ug for 1.0-3.0 mg of total protein lysate

IHC 1:2000-1:8000

IF/ICC 1:50-1:500

Applications

Tested Applications:

WB, IHC, IF/ICC, IP, ELISA

Cited Applications:

WB

Species Specificity:

human, mouse, rat

Cited Species:

human, mouse

Note-IHC: suggested antigen retrieval with TE buffer pH 9.0; (*) Alternatively, antigen retrieval may be performed with citrate buffer pH 6.0

Positive Controls:

WB : BxPC-3 cells, MCF-7 cells, A2780 cells, HeLa cells, PC-3 cells

IP : MCF-7 cells,

IHC : human ovary cancer tissue,

IF/ICC : SKOV-3 cells, A549 cells

Background Information

RNA-binding motif protein 17 (RBM17), also named splicing factor 45, was first identified as a member of the spliceosome. RBM17 expression is low in normal tissues but is overexpressed in several forms of cancer, including breast, ovarian and prostate.

Notable Publications

Author	Pubmed ID	Journal	Application
Sean-Patrick Riechers	26908611	Hum Mol Genet	WB
Dongni Chen	35365208	J Exp Clin Cancer Res	WB

Storage

Storage:

Store at -20°C. Stable for one year after shipment.

Storage Buffer:

PBS with 0.02% sodium azide and 50% glycerol pH 7.3.

Aliquoting is unnecessary for -20°C storage

*** 20ul sizes contain 0.1% BSA

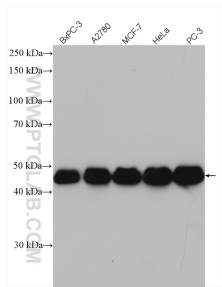
For technical support and original validation data for this product please contact:

T: 1 (888) 4PTGLAB (1-888-478-4522) (toll free in USA), or 1(312) 455-8498 (outside USA)

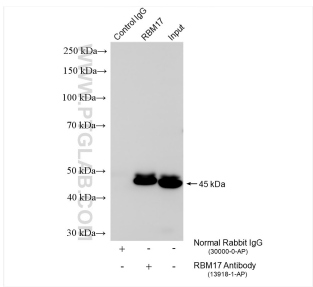
E: proteintech@ptglab.com
W: ptglab.com

This product is exclusively available under Proteintech Group brand and is not available to purchase from any other manufacturer.

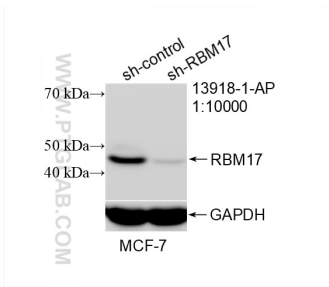
Selected Validation Data



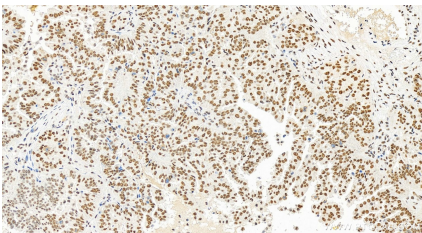
Various lysates were subjected to SDS PAGE followed by western blot with 13918-1-AP (RBM17 antibody) at dilution of 1:3000 incubated at room temperature for 1.5 hours.



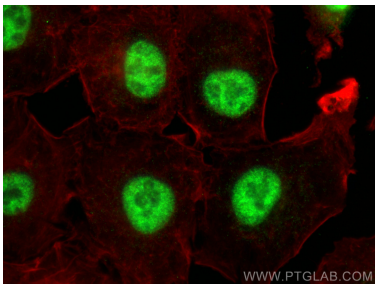
IP result of anti-RBM17 (IP:13918-1-AP, 4ug; Detection:13918-1-AP 1:10000) with MCF-7 cells lysate 1000 ug.



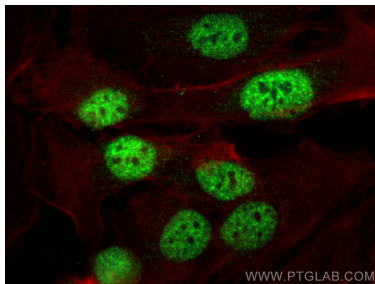
WB result of RBM17 antibody (13918-1-AP; 1:10000; incubated at room temperature for 1.5 hours) with sh-Control and sh-RBM17 transfected MCF-7 cells.



Immunohistochemical analysis of paraffin-embedded human ovary cancer tissue slide using 13918-1-AP (RBM17 antibody) at dilution of 1:4000 (under 20x lens). Heat mediated antigen retrieval with Tris-EDTA buffer (pH 9.0).



Immunofluorescent analysis of (4% PFA) fixed A549 cells using RBM17 antibody (13918-1-AP) at dilution of 1:200 and CoraLite®488-Conjugated Goat Anti-Rabbit IgG(H+L) (SA00013-2), CL594-Phalloidin (red).



Immunofluorescent analysis of (4% PFA) fixed SKOV-3 cells using RBM17 antibody (13918-1-AP) at dilution of 1:200 and CoraLite®488-Conjugated Goat Anti-Rabbit IgG(H+L) (SA00013-2), CL594-Phalloidin (red).