

For Research Use Only

VILIP1 Polyclonal antibody, PBS Only

Catalog Number:13919-1-PBS



Basic Information

Catalog Number:

13919-1-PBS

Size:

100ug, Concentration: 1 mg/ml by Nanodrop;

Source:

Rabbit

Isotype:

IgG

Immunogen Catalog Number:

AG4923

GenBank Accession Number:

BC022012

GeneID (NCBI):

7447

UNIPROT ID:

P62760

Full Name:

visinin-like 1

Calculated MW:

22 kDa

Observed MW:

18-24 kDa

Purification Method:

Antigen affinity purification

Applications

Tested Applications:

WB, IHC, IF/ICC, IP, Indirect ELISA

Species Specificity:

human, mouse, rat

Background Information

Visinin-like protein 1 (VILIP1) is also named VLP-1, hippocalcin-like protein 3 (HLP3), VSNL1 and VISL1. The neuronal calcium sensor protein VILIP1 forms a complex with neurotransmitter-gated P2X2 receptors, functions as a channel regulator, and likely binds more tightly to P2X2 receptors in an activation- and calcium-dependent manner (PMID: 18922787). VILIP1 is widely expressed and involved in physiological and disease processes throughout the body, including tumor formation (PMID: 17311005, PMID: 18301774). VILIP1 is localized primarily in the rat hippocampus, where it controls neuronal excitability important for learning and memory (PMID: 18440708, PMID: 15336574). In particular, VILIP1 binds to the α -subunit of the α 4 β 2 nicotinic acetylcholine receptor (nAChR), which promotes its surface expression and trafficking in oocytes and hippocampal neurons (PMID: 1220248, PMID: 19063970).

Storage

Storage:

Store at -80°C.

Storage Buffer:

PBS only, pH7.3

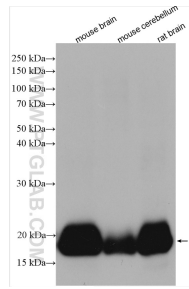
For technical support and original validation data for this product please contact:

T: 1 (888) 4PTGLAB (1-888-478-4522) (toll free in USA), or 1(312) 455-8498 (outside USA)

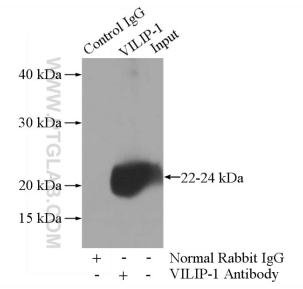
E: proteintech@ptglab.com
W: ptglab.com

This product is exclusively available under Proteintech Group brand and is not available to purchase from any other manufacturer.

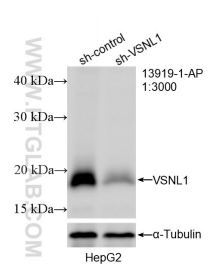
Selected Validation Data



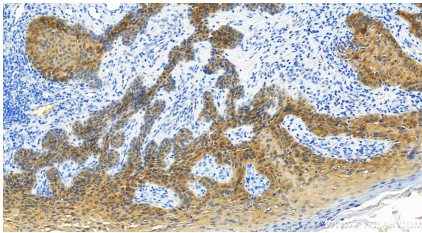
Various lysates were subjected to SDS PAGE followed by western blot with 13919-1-AP (VILIP-1 antibody) at dilution of 1:10000 incubated at room temperature for 1.5 hours. This data was developed using the same antibody clone with 13919-1-PBS in a different storage buffer formulation.



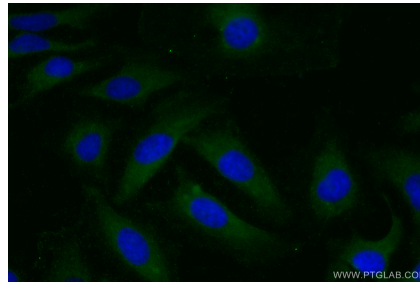
IP result of anti-VILIP-1 (IP:13919-1-AP, 3ug; Detection:13919-1-AP 1:1000) with mouse brain tissue lysate 2640ug. This data was developed using the same antibody clone with 13919-1-PBS in a different storage buffer formulation.



WB result of VILIP1 antibody (13919-1-AP; 1:3000; incubated at room temperature for 1.5 hours) with sh-Control and sh-VILIP1 transfected HepG2 cells. This data was developed using the same antibody clone with 13919-1-PBS in a different storage buffer formulation.



Immunohistochemical analysis of paraffin-embedded human brain tissue slide using 13919-1-AP (VILIP-1 antibody) at dilution of 1:2000 (under 20x lens). Heat mediated antigen retrieval with Tris-EDTA buffer (pH 9.0). This data was developed using the same antibody clone with 13919-1-PBS in a different storage buffer formulation.



Immunofluorescent analysis of (-20°C Ethanol) fixed HeLa cells using VILIP-1 antibody (13919-1-AP) at dilution of 1:400 and CoraLite® 488-Conjugated AffiniPure Goat Anti-Rabbit IgG(H+L) (SA00013-2). This data was developed using the same antibody clone with 13919-1-PBS in a different storage buffer formulation.