

For Research Use Only

PTPRE Polyclonal antibody

Catalog Number: 13922-1-AP

Featured Product

3 Publications



Basic Information

Catalog Number:

13922-1-AP

Size:

150ul, Concentration: 450 ug/ml by Nanodrop and 267 ug/ml by Bradford method using BSA as the standard;

Source:

Rabbit

Isotype:

IgG

Immunogen Catalog Number:

AG4932

GenBank Accession Number:

BC050062

GeneID (NCBI):

5791

UNIPROT ID:

P23469

Full Name:

protein tyrosine phosphatase, receptor type, E

Calculated MW:

81 kDa

Observed MW:

81 kDa

Purification Method:

Antigen affinity purification

Recommended Dilutions:

WB 1:200-1:1000

IHC 1:50-1:500

Applications

Tested Applications:

WB, IHC, ELISA

Cited Applications:

WB, IHC

Species Specificity:

human

Cited Species:

human

Note-IHC: suggested antigen retrieval with TE buffer pH 9.0; (*) Alternatively, antigen retrieval may be performed with citrate buffer pH 6.0

Positive Controls:

WB : HL-60 cells,

IHC : human breast cancer tissue, human liver tissue

Notable Publications

Author	Pubmed ID	Journal	Application
Bingqing Chen	33344226	Front Oncol	WB
Renshun Dong	38458013	Biomed Pharmacother	IHC
Chunyang Cai	38172938	Clin Epigenetics	WB

Storage

Storage:

Store at -20°C. Stable for one year after shipment.

Storage Buffer:

PBS with 0.02% sodium azide and 50% glycerol pH 7.3.

Aliquoting is unnecessary for -20°C storage

*** 20ul sizes contain 0.1% BSA

For technical support and original validation data for this product please contact:

T: 1 (888) 4PTGLAB (1-888-478-4522) (toll free in USA), or 1(312) 455-8498 (outside USA)

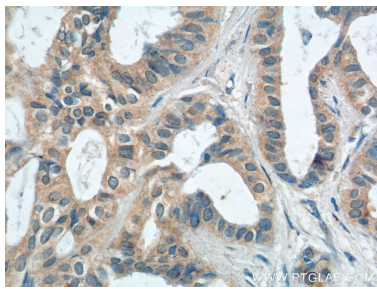
E: proteintech@ptglab.com
W: ptglab.com

This product is exclusively available under Proteintech Group brand and is not available to purchase from any other manufacturer.

Selected Validation Data



HL-60 cells were subjected to SDS PAGE followed by western blot with 13922-1-AP (PTPRE antibody) at dilution of 1:300 incubated at room temperature for 1.5 hours.



Immunohistochemical analysis of paraffin-embedded human breast cancer tissue slide using 13922-1-AP (PTPRE Antibody) at dilution of 1:200 (under 40x Lens).