

For Research Use Only

MTM1 Polyclonal antibody

Catalog Number: 13924-1-AP

1 Publications



Basic Information

Catalog Number: 13924-1-AP	GenBank Accession Number: BC030779	Purification Method: Antigen affinity purification
Size: 150ul , Concentration: 700 ug/ml by Nanodrop;	GeneID (NCBI): 4534	Recommended Dilutions: WB 1:500-1:2000
Source: Rabbit	UNIPROT ID: Q13496	IHC 1:50-1:500
Isotype: IgG	Full Name: myotubularin 1	IF/ICC 1:200-1:800
Immunogen Catalog Number: AG4940	Calculated MW: 70 kDa	
	Observed MW: 65-70 kDa	

Applications

Tested Applications: WB, IHC, IF/ICC, ELISA	Positive Controls: WB : L02 cells, Jurkat cells
Cited Applications: WB	IHC : rat skeletal muscle tissue, mouse skeletal muscle tissue
Species Specificity: human, mouse, rat	IF/ICC : L02 cells,
Cited Species: pig	
Note-IHC: suggested antigen retrieval with TE buffer pH 9.0; (*) Alternatively, antigen retrieval may be performed with citrate buffer pH 6.0	

Background Information

The MTM1(Myotubularin) gene encodes a protein that belongs to a family of putative tyrosine phosphatases. It is required for muscle cell differentiation. The protein is also a potent phosphatidylinositol 3-phosphate (PI3P) phosphatase, which is a 66 kDa ubiquitous protein that is found mutated in the X-linked genetic disorder myotubular myopathy(XLMTM).MTM1 could therefore act as a regulator of the highly active phosphoinositide (PI) metabolism in cells, where interconversions of the eight PIs described so far is controlled by a set of specific kinases and phosphatases(PMID:14660569). MTM1 has two isoforms with the molecular mass of 66kDa and 70 kDa.

Notable Publications

Author	Pubmed ID	Journal	Application
Bing-Qian Su	38295116	PLoS Pathog	WB

Storage

Storage:
Store at -20°C. Stable for one year after shipment.
Storage Buffer:
PBS with 0.02% sodium azide and 50% glycerol pH 7.3.
Aliquoting is unnecessary for -20°C storage

*** 20ul sizes contain 0.1% BSA

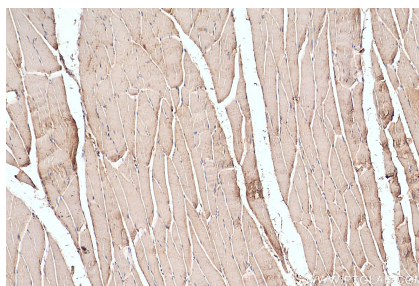
For technical support and original validation data for this product please contact:
T: 1 (888) 4PTGLAB (1-888-478-4522) (toll free in USA), or 1(312) 455-8498 (outside USA)
E: proteintech@ptglab.com
W: ptglab.com

This product is exclusively available under Proteintech Group brand and is not available to purchase from any other manufacturer.

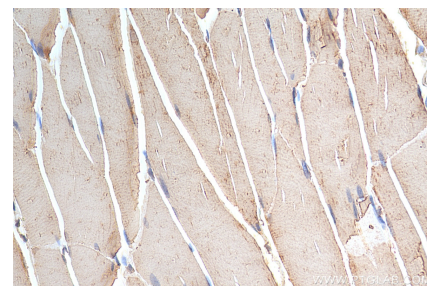
Selected Validation Data



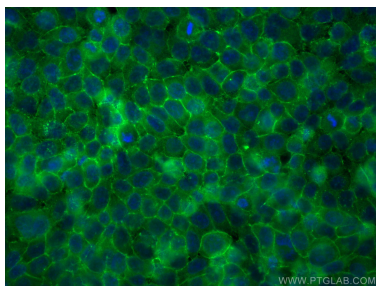
L02 cells were subjected to SDS PAGE followed by western blot with 13924-1-AP (MTM1 antibody) at dilution of 1:1000 incubated at room temperature for 1.5 hours.



Immunohistochemical analysis of paraffin-embedded rat skeletal muscle tissue slide using 13924-1-AP (MTM1 antibody) at dilution of 1:200 (under 10x lens). Heat mediated antigen retrieval with Tris-EDTA buffer (pH 9.0).



Immunohistochemical analysis of paraffin-embedded rat skeletal muscle tissue slide using 13924-1-AP (MTM1 antibody) at dilution of 1:200 (under 40x lens). Heat mediated antigen retrieval with Tris-EDTA buffer (pH 9.0).



Immunofluorescent analysis of (-20°C Ethanol) fixed L02 cells using MTM1 antibody (13924-1-AP) at dilution of 1:400 and CoraLite®488-Conjugated AffiniPure Goat Anti-Rabbit IgG(H+L).