

For Research Use Only

MDP-1 Polyclonal antibody

Catalog Number: 13929-1-AP



Basic Information

Catalog Number:

13929-1-AP

Size:

150ul , Concentration: 350 ug/ml by Nanodrop and 267 ug/ml by Bradford method using BSA as the standard;

Source:

Rabbit

Isotype:

IgG

Immunogen Catalog Number:

AG4949

GenBank Accession Number:

BC046912

GeneID (NCBI):

145553

UNIPROT ID:

Q86V88

Full Name:

magnesium-dependent phosphatase

1

Calculated MW:

14 kDa

Observed MW:

14 kDa

Purification Method:

Antigen affinity purification

Recommended Dilutions:

WB 1:200-1:1000

IHC 1:20-1:200

Applications

Tested Applications:

WB, IHC, ELISA

Species Specificity:

human, mouse, rat

Note-IHC: suggested antigen retrieval with TE buffer pH 9.0; (*) Alternatively, antigen retrieval may be performed with citrate buffer pH 6.0

Positive Controls:

WB : RAW 264.7 cells, HepG2 cells

IHC : human liver tissue,

Storage

Storage:

Store at -20°C. Stable for one year after shipment.

Storage Buffer:

PBS with 0.02% sodium azide and 50% glycerol pH 7.3.

Aliquoting is unnecessary for -20°C storage

*** 20ul sizes contain 0.1% BSA

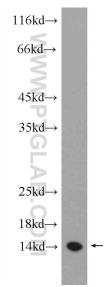
For technical support and original validation data for this product please contact:

T: 1 (888) 4PTGLAB (1-888-478-4522) (toll free in USA), or 1(312) 455-8498 (outside USA)

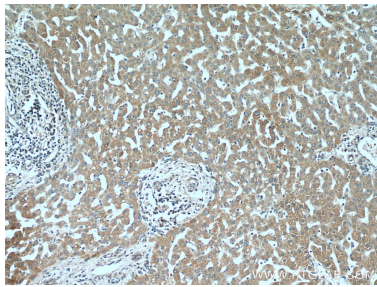
E: proteintech@ptglab.com
W: ptglab.com

This product is exclusively available under Proteintech Group brand and is not available to purchase from any other manufacturer.

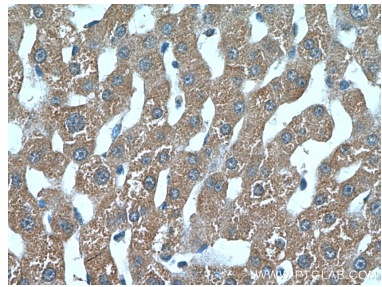
Selected Validation Data



RAW 264.7 cells were subjected to SDS PAGE followed by western blot with 13929-1-AP (MDP-1 Antibody) at dilution of 1:100 incubated at room temperature for 1.5 hours.



Immunohistochemical analysis of paraffin-embedded human liver tissue slide using 13929-1-AP (MDP-1 Antibody) at dilution of 1:100 (under 10x lens).



Immunohistochemical analysis of paraffin-embedded human liver tissue slide using 13929-1-AP (MDP-1 Antibody) at dilution of 1:100 (under 40x lens).