

For Research Use Only

SMCP Polyclonal antibody, PBS Only

Catalog Number: 13936-1-PBS



Basic Information

Catalog Number:

13936-1-PBS

Size:

100ug, Concentration: 1 mg/ml by Nanodrop;

Source:

Rabbit

Isotype:

IgG

Immunogen Catalog Number:

AG4984

GenBank Accession Number:

BC014593

GeneID (NCBI):

4184

UNIPROT ID:

P49901

Full Name:

sperm mitochondria-associated cysteine-rich protein

Calculated MW:

13 kDa

Observed MW:

12-25 kDa

Purification Method:

Antigen affinity purification

Applications

Tested Applications:

WB, Indirect ELISA

Species Specificity:

human

Background Information

SMCP, also named as MCS and MCSP, is a cysteine- and proline-rich structural protein that is closely associated with the keratinous capsules of sperm mitochondria in the mitochondrial sheath surrounding the outer dense fibers and axoneme. It is involved in sperm motility.

Storage

Storage:

Store at -80°C.

Storage Buffer:

PBS only, pH7.3

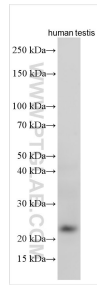
For technical support and original validation data for this product please contact:

T: 1 (888) 4PTGLAB (1-888-478-4522) (toll free in USA), or 1(312) 455-8498 (outside USA)

E: proteintech@ptglab.com
W: ptglab.com

This product is exclusively available under Proteintech Group brand and is not available to purchase from any other manufacturer.

Selected Validation Data



Various lysates were subjected to SDS PAGE followed by western blot with 13936-1-AP (SMCP antibody) at dilution of 1:4000 incubated at room temperature for 1.5 hours. This data was developed using the same antibody clone with 13936-1-PBS in a different storage buffer formulation.