

For Research Use Only

GAPDHS Polyclonal antibody

Catalog Number: 13937-1-AP

15 Publications



Basic Information

Catalog Number:

13937-1-AP

Size:

150ul, Concentration: 600 ug/ml by Nanodrop;

Source:

Rabbit

Isotype:

IgG

Immunogen Catalog Number:

AG4988

GenBank Accession Number:

BC036373

GeneID (NCBI):

26330

UNIPROT ID:

O14556

Full Name:

glyceraldehyde-3-phosphate dehydrogenase, spermatogenic

Calculated MW:

45 kDa

Observed MW:

64 kDa

Purification Method:

Antigen affinity purification

Recommended Dilutions:

WB 1:500-1:3000

Applications

Tested Applications:

WB, ELISA

Cited Applications:

WB

Species Specificity:

mouse, rat, human

Cited Species:

human, mouse, rat, chicken

Positive Controls:

WB: mouse testis tissue, rat testis tissue

Background Information

GAPDHS (Glyceraldehyde-3-phosphate dehydrogenase, testis-specific) is also named as GAPD2, GAPDH2, GAPDS and belongs to the glyceraldehyde-3-phosphate dehydrogenase family. It may play an important role in regulating the switch between different pathways for energy production during spermiogenesis and in the spermatozoon. GAPDHS is a promising contraceptive target because it is specific to male germ cells, essential for sperm motility and male fertility, and well suited to pharmacological inhibition (PMID:20828617).

Notable Publications

Author	Pubmed ID	Journal	Application
Jingya Gu	33029279	Oxid Med Cell Longev	WB
Zijun Peng	34741939	J Hazard Mater	WB
Guodong Liu	29344176	Oncol Lett	WB

Storage

Storage:

Store at -20°C. Stable for one year after shipment.

Storage Buffer:

PBS with 0.02% sodium azide and 50% glycerol pH 7.3.

Aliquoting is unnecessary for -20°C storage

*** 20ul sizes contain 0.1% BSA

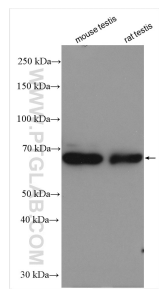
For technical support and original validation data for this product please contact:

T: 1 (888) 4PTGLAB (1-888-478-4522) (toll free in USA), or 1(312) 455-8498 (outside USA)

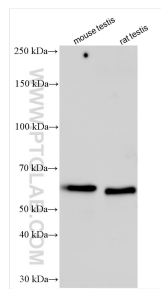
E: proteintech@ptglab.com
W: ptglab.com

This product is exclusively available under Proteintech Group brand and is not available to purchase from any other manufacturer.

Selected Validation Data



Various lysates were subjected to SDS PAGE followed by western blot with 13937-1-AP (GAPDH antibody) at dilution of 1:1500 incubated at room temperature for 1.5 hours.



Various lysates were subjected to SDS PAGE followed by western blot with 13937-1-AP (GAPDH antibody) at dilution of 1:5000 incubated at room temperature for 1.5 hours.