

For Research Use Only

# PGM2L1 Polyclonal antibody

Catalog Number: 13942-1-AP

1 Publications



## Basic Information

### Catalog Number:

13942-1-AP

### Size:

150ul, Concentration: 600 ug/ml by Nanodrop and 333 ug/ml by Bradford method using BSA as the standard;

### Source:

Rabbit

### Isotype:

IgG

### Immunogen Catalog Number:

AG5019

### GenBank Accession Number:

BC059360

### GeneID (NCBI):

283209

### UNIPROT ID:

Q6PCE3

### Full Name:

phosphoglucomutase 2-like 1

### Calculated MW:

70 kDa

### Observed MW:

72 kDa

### Purification Method:

Antigen affinity purification

### Recommended Dilutions:

WB 1:1000-1:6000

IP 0.5-4.0 ug for 1.0-3.0 mg of total protein lysate

IHC 1:50-1:500

## Applications

### Tested Applications:

WB, IP, IHC, ELISA

### Cited Applications:

WB, IHC

### Species Specificity:

human, mouse, rat

### Cited Species:

human

**Note-IHC: suggested antigen retrieval with TE buffer pH 9.0; (\*) Alternatively, antigen retrieval may be performed with citrate buffer pH 6.0**

### Positive Controls:

WB : mouse brain tissue, mouse skeletal muscle tissue, rat brain tissue, mouse cerebellum tissue, rat cerebellum tissue

IP : mouse brain tissue,

IHC : human gliomas tissue,

## Notable Publications

Author	Pubmed ID	Journal	Application
Stephanie Zur Nedden	39332493	Metabolism	WB
Motahareh Solina Safari	39182844	Mol Metab	WB,IHC

## Storage

### Storage:

Store at -20°C. Stable for one year after shipment.

### Storage Buffer:

PBS with 0.02% sodium azide and 50% glycerol pH 7.3.

Aliquoting is unnecessary for -20°C storage

\*\*\* 20ul sizes contain 0.1% BSA

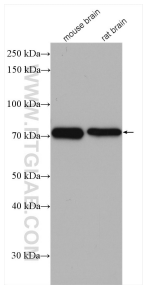
For technical support and original validation data for this product please contact:

T: 1 (888) 4PTGLAB (1-888-478-4522) (toll free in USA), or 1(312) 455-8498 (outside USA)

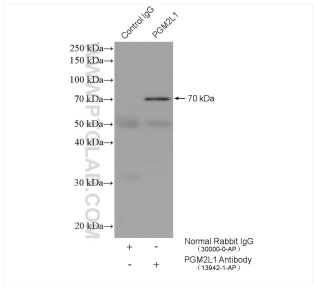
E: [proteintech@ptglab.com](mailto:proteintech@ptglab.com)  
W: [ptglab.com](http://ptglab.com)

This product is exclusively available under Proteintech Group brand and is not available to purchase from any other manufacturer.

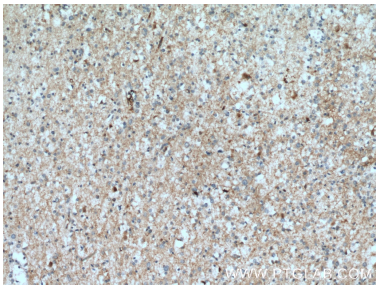
Selected Validation Data



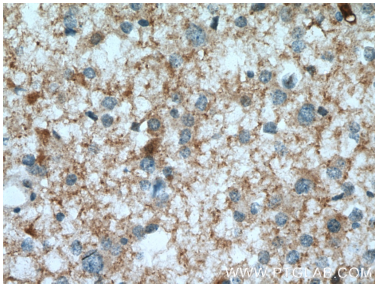
Various lysates were subjected to SDS PAGE followed by western blot with 13942-1-AP (PGM2L1 antibody) at dilution of 1:2000 incubated at room temperature for 1.5 hours.



IP result of anti-PGM2L1 (IP:13942-1-AP, 4ug; Detection:13942-1-AP 1:300) with mouse brain tissue lysate 4000 ug.



Immunohistochemical analysis of paraffin-embedded human gliomas tissue slide using 13942-1-AP (PGM2L1 antibody) at dilution of 1:100 (under 10x lens. Heat mediated antigen retrieval with Tris-EDTA buffer (pH 9.0).



Immunohistochemical analysis of paraffin-embedded human gliomas tissue slide using 13942-1-AP (PGM2L1 antibody) at dilution of 1:100 (under 40x lens. Heat mediated antigen retrieval with Tris-EDTA buffer (pH 9.0).