

For Research Use Only

EMB Polyclonal antibody

Catalog Number: 13946-1-AP



Basic Information

Catalog Number: 13946-1-AP	GenBank Accession Number: BC059398	Purification Method: Antigen affinity purification
Size: 150ul , Concentration: 260 ug/ml by Nanodrop and 187 ug/ml by Bradford method using BSA as the standard;	GeneID (NCBI): 133418	Recommended Dilutions: WB 1:500-1:2000 IHC 1:50-1:500
Source: Rabbit	UNIPROT ID: Q6PCB8	
Isotype: IgG	Full Name: embigin homolog (mouse)	
Immunogen Catalog Number: AG5031	Calculated MW: 37 kDa	
	Observed MW: 70 kDa	

Applications

Tested Applications: WB, IHC, ELISA	Positive Controls:
Species Specificity: human, mouse	WB : HeLa cells, mouse skeletal muscle tissue
Note-IHC: suggested antigen retrieval with TE buffer pH 9.0; (*) Alternatively, antigen retrieval may be performed with citrate buffer pH 6.0	IHC : mouse testis tissue,

Background Information

EMB, also named as Embigin, is a 327 amino acid protein, which contains two Ig-like V-type (immunoglobulin-like) domains. EMB as a membrane protein may function as a regulator of cell/ECM interactions during development and in the homeostasis of normal adult tissues. EMB is a transmembrane glycoprotein with a protein component of 34 kDa, but western blot analysis of embigin in mouse soleus muscles detects a glycosylated full-length protein with an molecular mass of 70 kDa.(PMID: 19164284)

Storage

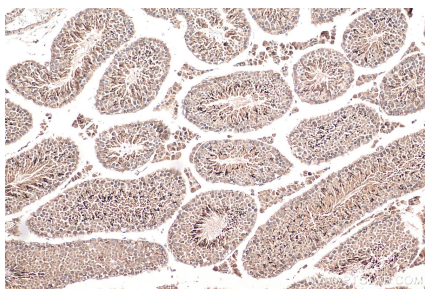
Storage:
Store at -20°C. Stable for one year after shipment.
Storage Buffer:
PBS with 0.02% sodium azide and 50% glycerol pH 7.3.
Aliquoting is unnecessary for -20°C storage

*** 20ul sizes contain 0.1% BSA

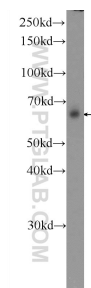
For technical support and original validation data for this product please contact:
T: 1 (888) 4PTGLAB (1-888-478-4522) (toll free in USA), or 1(312) 455-8498 (outside USA)
E: proteintech@ptglab.com
W: ptglab.com

This product is exclusively available under Proteintech Group brand and is not available to purchase from any other manufacturer.

Selected Validation Data



Immunohistochemical analysis of paraffin-embedded mouse testis tissue slide using 13946-1-AP (EMB antibody) at dilution of 1:200 (under 10x lens). Heat mediated antigen retrieval with Tris-EDTA buffer (pH 9.0).



HeLa cells were subjected to SDS PAGE followed by western blot with 13946-1-AP (EMB Antibody) at dilution of 1:1000 incubated at room temperature for 1.5 hours.