

For Research Use Only

GPX3 Polyclonal antibody, PBS Only

Catalog Number: 13947-1-PBS

Featured Product



Basic Information

Catalog Number:

13947-1-PBS

Size:

100ug, Concentration: 1 mg/ml by Nanodrop;

Source:

Rabbit

Isotype:

IgG

Immunogen Catalog Number:

AG5054

GenBank Accession Number:

BC050378

GeneID (NCBI):

2878

UNIPROT ID:

P22352

Full Name:

glutathione peroxidase 3 (plasma)

Calculated MW:

226 aa, 26 kDa

Observed MW:

20-27 kDa

Purification Method:

Antigen affinity purification

Applications

Tested Applications:

WB, IHC, IF/ICC, IF-P, Indirect ELISA

Species Specificity:

human, mouse, rat

Background Information

GPX3 (glutathione peroxidase 3) is also named as Plasma Glutathione Peroxidase. GPX3 can protect cells and enzymes from oxidative damage, by catalyzing the reduction of hydrogen peroxide, lipid peroxides and organic hydroperoxide, by glutathione. GPX3 is secreted into plasma and like GPX1, is an 100 kDa homotetramer consisting of four identical 23 kDa subunits, each containing a selenocysteine residue at the active site. It can be detected a band of 20 kDa which is considered as the chain A of GPX3 (selenocysteine to glycine mutant).

Storage

Storage:

Store at -80°C.

Storage Buffer:

PBS Only

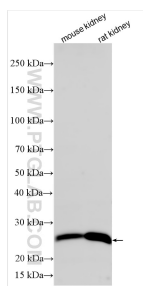
For technical support and original validation data for this product please contact:

T: 1 (888) 4PTGLAB (1-888-478-4522) (toll free in USA), or 1(312) 455-8498 (outside USA)

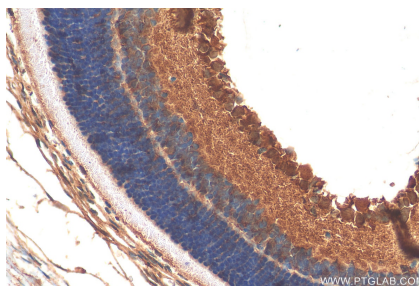
E: proteintech@ptglab.com
W: ptglab.com

This product is exclusively available under Proteintech Group brand and is not available to purchase from any other manufacturer.

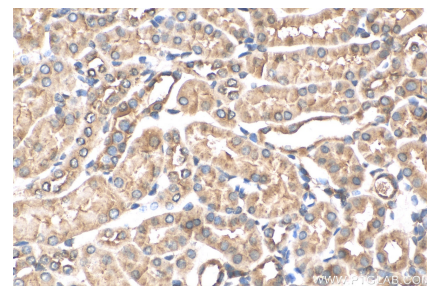
Selected Validation Data



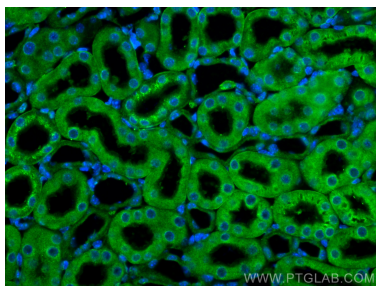
Various lysates were subjected to SDS PAGE followed by western blot with 13947-1-AP (GPX3 antibody) at dilution of 1:1000 incubated at room temperature for 1.5 hours. This data was developed using the same antibody clone with 13947-1-PBS in a different storage buffer formulation.



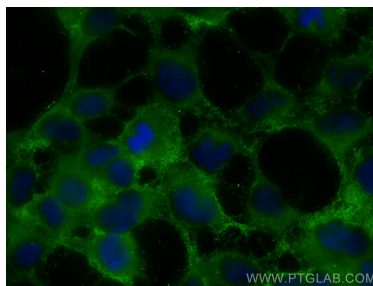
Immunohistochemical analysis of paraffin-embedded rat eye tissue slide using 13947-1-AP (GPX3 antibody) at dilution of 1:200 (under 40x lens). Heat mediated antigen retrieval with Tris-EDTA buffer (pH 9.0). This data was developed using the same antibody clone with 13947-1-PBS in a different storage buffer formulation.



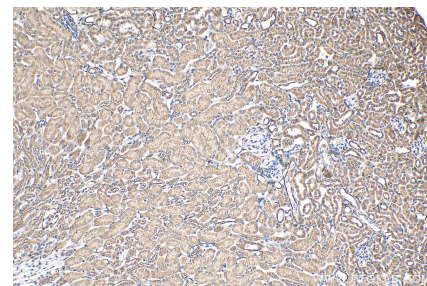
Immunohistochemical analysis of paraffin-embedded mouse kidney tissue slide using 13947-1-AP (GPX3 antibody) at dilution of 1:200 (under 40x lens). Heat mediated antigen retrieval with Tris-EDTA buffer (pH 9.0). This data was developed using the same antibody clone with 13947-1-PBS in a different storage buffer formulation.



Immunofluorescent analysis of (4% PFA) fixed paraffin-embedded mouse kidney tissue using GPX3 antibody (13947-1-AP) at dilution of 1:200 and CoraLite®488-Conjugated Goat Anti-Rabbit IgG(H+L) (SA00013-2). Heat mediated antigen retrieval with Tris-EDTA buffer (pH 9.0). This data was developed using the same antibody clone with 13947-1-PBS in a different storage buffer formulation.



Immunofluorescent analysis of (-20°C Ethanol) fixed HEK-293 cells using GPX3 antibody (13947-1-AP) at dilution of 1:400 and CoraLite®488-Conjugated AffiniPure Goat Anti-Rabbit IgG(H+L). This data was developed using the same antibody clone with 13947-1-PBS in a different storage buffer formulation.



Immunohistochemical analysis of paraffin-embedded mouse kidney tissue slide using 13947-1-AP (GPX3 antibody) at dilution of 1:200 (under 10x lens). Heat mediated antigen retrieval with Tris-EDTA buffer (pH 9.0). This data was developed using the same antibody clone with 13947-1-PBS in a different storage buffer formulation.