

For Research Use Only

ABCF1 Polyclonal antibody, PBS Only

Catalog Number: 13950-1-PBS

Featured Product



Basic Information

Catalog Number:

13950-1-PBS

Size:

100ug, Concentration: 1 mg/ml by Nanodrop;

Source:

Rabbit

Isotype:

IgG

Immunogen Catalog Number:

AG5061

GenBank Accession Number:

BC034488

GeneID (NCBI):

23

UNIPROT ID:

Q8NE71

Full Name:

ATP-binding cassette, sub-family F (GCN20), member 1

Calculated MW:

92 kDa

Observed MW:

110 kDa

Purification Method:

Antigen affinity purification

Applications

Tested Applications:

WB, IHC, IF/ICC, IP, Indirect ELISA

Species Specificity:

human, mouse, rat

Background Information

ABCF1, also known as ABC27, and ABC50, is a member of the superfamily of ATP-binding cassette (ABC) transporters and contains two ABC transporter domains. ABC genes are divided into seven distinct subfamilies (ABC1, MDR/TAP, MRP, ALD, OABP, GCN20, White). Unlike other members of the superfamily, ABCF1 lacks the transmembrane domains that are characteristic of most ABC transporters. ABCF1 may be regulated by tumor necrosis factor-alpha and play a role in the enhancement of protein synthesis and thus participate in the inflammatory processes (PMID: 9790762).

Storage

Storage:

Store at -80°C.

Storage Buffer:

PBS Only

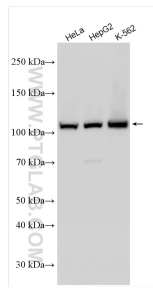
For technical support and original validation data for this product please contact:

T: 1 (888) 4PTGLAB (1-888-478-4522) (toll free in USA), or 1(312) 455-8498 (outside USA)

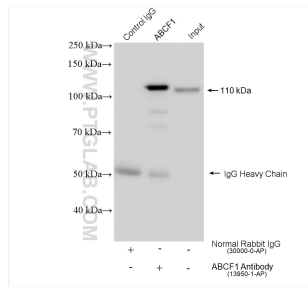
E: proteintech@ptglab.com
W: ptglab.com

This product is exclusively available under Proteintech Group brand and is not available to purchase from any other manufacturer.

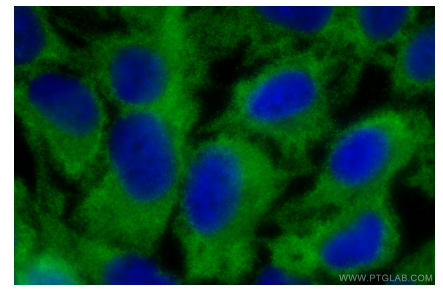
Selected Validation Data



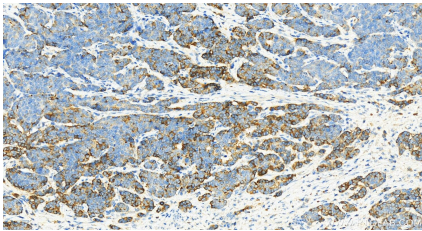
Various lysates were subjected to SDS PAGE followed by western blot with 13950-1-AP (ABCF1 antibody) at dilution of 1:5000 incubated at room temperature for 1.5 hours. This data was developed using the same antibody clone with 13950-1-PBS in a different storage buffer formulation.



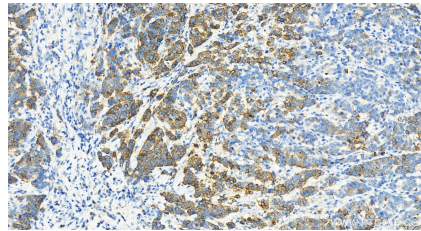
IP result of anti-ABCF1 (IP:13950-1-AP, 4ug; Detection:13950-1-AP 1:6000) with K-562 cells lysate 1360 ug. This data was developed using the same antibody clone with 13950-1-PBS in a different storage buffer formulation.



Immunofluorescent analysis of (-20°C Ethanol) fixed HeLa cells using ABCF1 antibody (13950-1-AP) at dilution of 1:400 and CoraLite®488-Conjugated AffiniPure Goat Anti-Rabbit IgG(H+L). This data was developed using the same antibody clone with 13950-1-PBS in a different storage buffer formulation.



Immunohistochemical analysis of paraffin-embedded stomach cancer slide using 13950-1-AP (ABCF1 antibody) at dilution of 1:1000 (under 20x lens). Heat mediated antigen retrieval with Tris-EDTA buffer (pH 9.0). This data was developed using the same antibody clone with 13950-1-PBS in a different storage buffer formulation.



Immunohistochemical analysis of paraffin-embedded stomach cancer slide using 13950-1-AP (ABCF1 antibody) at dilution of 1:1000 (under 20x lens). Heat mediated antigen retrieval with Tris-EDTA buffer (pH 9.0). This data was developed using the same antibody clone with 13950-1-PBS in a different storage buffer formulation.