

For Research Use Only

# PPFIBP2 Polyclonal antibody

Catalog Number: 13953-1-AP

Featured Product

2 Publications



## Basic Information

<b>Catalog Number:</b> 13953-1-AP	<b>GenBank Accession Number:</b> BC021714	<b>Purification Method:</b> Antigen affinity purification
<b>Size:</b> 150ul , Concentration: 350 µg/ml by Nanodrop and 300 µg/ml by Bradford method using BSA as the standard;	<b>GeneID (NCBI):</b> 8495	<b>Recommended Dilutions:</b> IHC 1:50-1:500 IF 1:10-1:100
<b>Source:</b> Rabbit	<b>Full Name:</b> PTPRF interacting protein, binding protein 2 (liprin beta 2)	
<b>Isotype:</b> IgG	<b>Calculated MW:</b> 99 kDa	
<b>Immunogen Catalog Number:</b> AG5064		

## Applications

<b>Tested Applications:</b> IF, IHC, ELISA	<b>Positive Controls:</b> IHC : human stomach tissue, IF : A431 cells,
<b>Cited Applications:</b> IF, WB	
<b>Species Specificity:</b> human, mouse, rat	
<b>Cited Species:</b> human, mouse	
<b>Note-IHC: suggested antigen retrieval with TE buffer pH 9.0; (*) Alternatively, antigen retrieval may be performed with citrate buffer pH 6.0</b>	

## Background Information

### Notable Publications

Author	Pubmed ID	Journal	Application
Sara Chiaretti	26663347	Biol Cell	WB, IF
Mengting Xu	38242047	Ecotoxicol Environ Saf	WB

## Storage

**Storage:**  
Store at -20°C. Stable for one year after shipment.  
**Storage Buffer:**  
PBS with 0.02% sodium azide and 50% glycerol pH 7.3.  
Aliquoting is unnecessary for -20°C storage

\*\*\* 20ul sizes contain 0.1% BSA

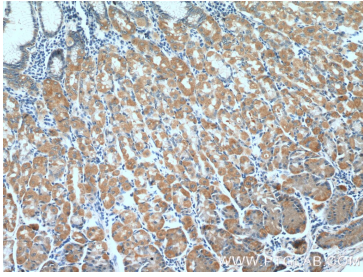
For technical support and original validation data for this product please contact:

T: 1 (888) 4PTGLAB (1-888-478-4522) (toll free in USA), or 1(312) 455-8498 (outside USA)

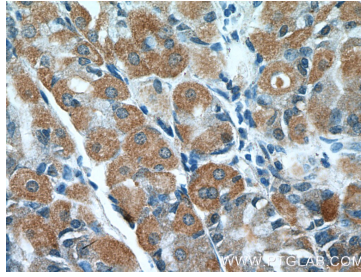
E: proteintech@ptglab.com  
W: ptglab.com

This product is exclusively available under Proteintech Group brand and is not available to purchase from any other manufacturer.

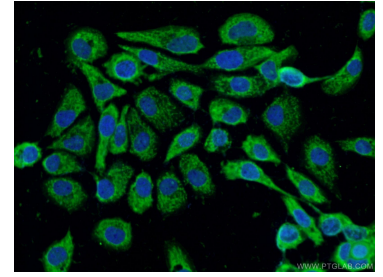
## Selected Validation Data



Immunohistochemical analysis of paraffin-embedded human stomach tissue slide using 13953-1-AP (PPFIBP2 Antibody) at dilution of 1:200 (under 10x lens).



Immunohistochemical analysis of paraffin-embedded human stomach tissue slide using 13953-1-AP (PPFIBP2 Antibody) at dilution of 1:200 (under 40x lens).



Immunofluorescent analysis of A431 cells using 13953-1-AP (PPFIBP2 antibody) at dilution of 1:25 and Alexa Fluor 488-conjugated AffiniPure Goat Anti-Rabbit IgG(H+L).