

For Research Use Only

# WDFY1 Polyclonal antibody, PBS Only

Catalog Number: 13960-1-PBS



## Basic Information

**Catalog Number:**

13960-1-PBS

**Size:**

100ug , Concentration: 1 mg/ml by Nanodrop;

**Source:**

Rabbit

**Isotype:**

IgG

**Immunogen Catalog Number:**

AG4877

**GenBank Accession Number:**

BC040525

**GeneID (NCBI):**

57590

**UNIPROT ID:**

Q8IWB7

**Full Name:**

WD repeat and FYVE domain containing 1

**Calculated MW:**

410 aa, 46 kDa

**Observed MW:**

43-46 kDa

**Purification Method:**

Antigen affinity purification

## Applications

**Tested Applications:**

WB, Indirect ELISA

**Species Specificity:**

human, mouse, rat

## Background Information

WD repeating domain FYVE1 (WDFY1) belongs to the WD40 protein family, which plays key roles in diverse cellular processes, including signal transduction, gene transcription, vesicle fusion, and spermatogenesis (PMID: 32867693; PMID: 10322433). WDFY1 is highly expressed in mouse testis and is dispensable for mouse spermatogenesis and male fertility (PMID: 35121371). The bands of 24 kDa and 19 kDa may be potential isoforms of WDFY1.

## Storage

**Storage:**

Store at -80°C.

**Storage Buffer:**

PBS Only

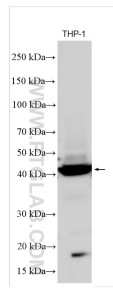
For technical support and original validation data for this product please contact:

T: 1 (888) 4PTGLAB (1-888-478-4522) (toll free in USA), or 1(312) 455-8498 (outside USA)

E: [proteintech@ptglab.com](mailto:proteintech@ptglab.com)  
W: [ptglab.com](http://ptglab.com)

**This product is exclusively available under Proteintech Group brand and is not available to purchase from any other manufacturer.**

## Selected Validation Data



THP-1 cells were subjected to SDS PAGE followed by western blot with 13960-1-AP (WDFY1 antibody) at dilution of 1:1500 incubated at room temperature for 1.5 hours. This data was developed using the same antibody clone with 13960-1-PBS in a different storage buffer formulation.