

For Research Use Only

# PPFIBP1 Polyclonal antibody

Catalog Number: 13961-1-AP

2 Publications



## Basic Information

### Catalog Number:

13961-1-AP

### Size:

150ul, Concentration: 450 ug/ml by Nanodrop and 233 ug/ml by Bradford method using BSA as the standard;

### Source:

Rabbit

### Isotype:

IgG

### Immunogen Catalog Number:

AG4884

### GenBank Accession Number:

BC050281

### GeneID (NCBI):

8496

### UNIPROT ID:

Q86W92

### Full Name:

PTPRF interacting protein, binding protein 1 (liprin beta 1)

### Calculated MW:

1011 aa, 114 kDa

### Observed MW:

114 kDa

### Purification Method:

Antigen affinity purification

### Recommended Dilutions:

WB 1:500-1:1000

IP 0.5-4.0 ug for 1.0-3.0 mg of total protein lysate

IF/ICC 1:200-1:800

## Applications

### Tested Applications:

WB, IF/ICC, FC (Intra), IP, ELISA

### Cited Applications:

IF

### Species Specificity:

human

### Cited Species:

human

### Positive Controls:

WB : HepG2 cells, DU 145 cells

IP : HepG2 cells,

IF/ICC : U2OS cells,

## Notable Publications

Author	Pubmed ID	Journal	Application
Qichang Gao	39099665	J Inflamm Res	
Xingchen Li	37339751	Open Biol	IF

## Storage

### Storage:

Store at -20°C. Stable for one year after shipment.

### Storage Buffer:

PBS with 0.02% sodium azide and 50% glycerol pH 7.3.

Aliquoting is unnecessary for -20°C storage

\*\*\* 20ul sizes contain 0.1% BSA

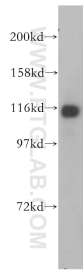
For technical support and original validation data for this product please contact:

T: 1 (888) 4PTGLAB (1-888-478-4522) (toll free in USA), or 1(312) 455-8498 (outside USA)

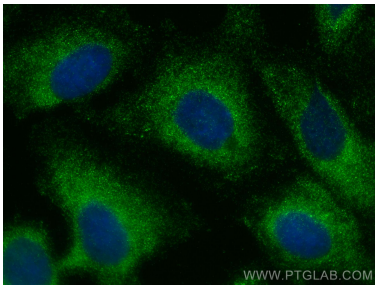
E: [proteintech@ptglab.com](mailto:proteintech@ptglab.com)  
W: [ptglab.com](http://ptglab.com)

This product is exclusively available under Proteintech Group brand and is not available to purchase from any other manufacturer.

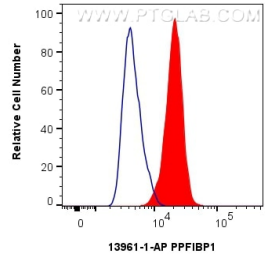
Selected Validation Data



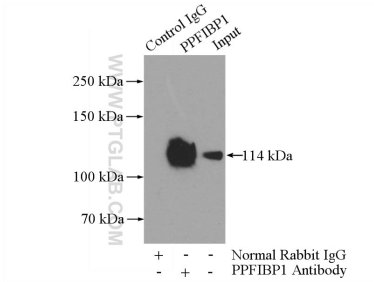
HepG2 cells were subjected to SDS PAGE followed by western blot with 13961-1-AP (PPFIBP1 antibody) at dilution of 1:1000 incubated at room temperature for 1.5 hours.



Immunofluorescent analysis of (-20°C Methanol) fixed U2OS cells using PPFIBP1 antibody (13961-1-AP) at dilution of 1:400 and CoraLite®488-Conjugated AffiniPure Goat Anti-Rabbit IgG(H+L) (SA00013-2).



1x10<sup>6</sup> HepG2 cells were intracellularly stained with 0.25 ug PPFIBP1 Polyclonal antibody (13961-1-AP) and CoraLite®488-Conjugated Goat Anti-Rabbit IgG(H+L) (SA00013-2)(red), or 0.25 ug Rabbit IgG control Rabbit PolyAb (30000-0-AP) (blue). Cells were fixed with 4% PFA and permeabilized with Flow Cytometry Perm Buffer (PF00011-C).



IP result of anti-PPFIBP1 (IP:13961-1-AP, 4ug; Detection:13961-1-AP 1:500) with HepG2 cells lysate 2400ug.