

For Research Use Only

Siglec-12 Polyclonal antibody

Catalog Number: 13964-1-AP



Basic Information

Catalog Number:

13964-1-AP

Size:

150ul , Concentration: 650 ug/ml by Nanodrop;

Source:

Rabbit

Isotype:

IgG

Immunogen Catalog Number:

AG4939

GenBank Accession Number:

BC035809

GeneID (NCBI):

89858

UNIPROT ID:

Q96PQ1

Full Name:

sialic acid binding Ig-like lectin 12

Calculated MW:

595 aa, 65 kDa

Observed MW:

70 kDa

Purification Method:

Antigen affinity purification

Recommended Dilutions:

WB 1:500-1:1000

Applications

Tested Applications:

WB, ELISA

Species Specificity:

human, mouse, rat, pig

Positive Controls:

WB : mouse spleen tissue, rat spleen tissue, pig spleen tissue

Background Information

Sialic acid-binding immunoglobulin-like lectins (SIGLECs) are a family of cell surface proteins belonging to the immunoglobulin superfamily that contain sialoside-binding N-terminal domains (PMID: 22749793). Sialic acid binding Ig-like lectin 12 (Siglec-12, also known as S2V, SLG, SIGLECL1, and Siglec-XII) is a member of the SIGLEC3-like subfamily of SIGLECs, which is highly expressed in the spleen, such as CD8+ cells, macrophages, neutrophils, and dendritic cells. It mediates sialic-acid-dependent binding to cells and could be an identification of therapeutic targets and prognostic biomarkers of sarcomas (PMID: 38182638).

Storage

Storage:

Store at -20°C. Stable for one year after shipment.

Storage Buffer:

PBS with 0.02% sodium azide and 50% glycerol pH 7.3.

Aliquoting is unnecessary for -20°C storage

*** 20ul sizes contain 0.1% BSA

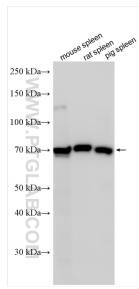
For technical support and original validation data for this product please contact:

T: 1 (888) 4PTGLAB (1-888-478-4522) (toll free in USA), or 1(312) 455-8498 (outside USA)

E: proteintech@ptglab.com
W: ptglab.com

This product is exclusively available under Proteintech Group brand and is not available to purchase from any other manufacturer.

Selected Validation Data



Various lysates were subjected to SDS PAGE followed by western blot with 13964-1-AP (SIGLEC12 antibody) at dilution of 1:600 incubated at room temperature for 1.5 hours.